



Local News July 2020

Issue No. 492

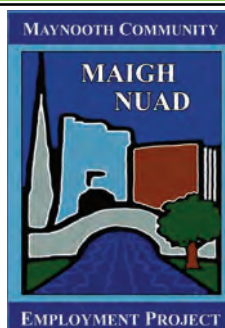
Online Version

This publication is produced by Maynooth Community Employment Project, supported by the Department of Employment Affairs & Social Protection, which is funded by the Irish Government. The views & opinions expressed in this Publication are those of the contributors.



We're back – Maynooth Community Employment Project is fully open for business

Our office in Tesco's Carton Park is open to the people of Maynooth again after easing of Covid 19 restrictions following the restart of our work in Maynooth Harbour and Maynooth Town Soccer Club which came back as part of an earlier lifting of lockdown restrictions. As with many other publications the lockdown meant that many of our loyal advertisers were not in a position to purchase adverts and we look forward to welcoming them back as things return to a more normal trading position in the coming months.



The Maynooth Newsletter continued to be published online during the lockdown and we monitored the number of visits to the online version. It is very pleasing to report that the number of hits were very high and it is clear that readers viewing the online version regularly took a look at the Maynooth Newsletter Archive. The Archives hold copies of the Newsletter as far back as the 1970s. In fact we got a number of nice comments on e-mails from Maynooth natives and former Maynooth University students from around the world wishing us and the people of Maynooth well during the pandemic.

There was also increased interest in our archives of Maynooth Old Photos which is made up of several collections of old photos from as far back as the late 1800s. Our website is maintained by the staff of the Community Employment Project and provides a historical footprint of our Town back through time.

Our remit is to serve the people of Maynooth and despite the setback of Covid 19, our voluntary directors and management are committed to continuing to deliver for the people of the town. In addition to our office we also care for the area around Maynooth Harbour which we do to ensure that this key recreational area is clean and managed for the enjoyment of the people of the town. We would like to thank everyone that used the area in the past few months for your care so that it did not become littered and to Kildare County Council who kept an eye on the bins when we were not permitted to work there.

Of course we support many other community groups through our office and the Maynooth Newsletter and many in the community realise the significant resource that Maynooth Community Employment Project is to the town. Therefore in the coming months we will be looking at ways that we can further extend our support to the wider community in planning for the future of the project. We welcome input and our door is always open to people with new ideas.

Because we receive some funding from the Government as we provide work experience and training we have to be structured as a company to ensure accountability but everyone involved in our management are unpaid volunteers who bring various skills and experience to the organisation. If during the last few months you have been thinking about giving something back to your community getting involved with Maynooth Community Employment Project could be an option particularly if you have relevant skills. If you are interested you can e-mail office@maynoothcep.com for more information.



Gardaí, members of the Emergency Services and local people paused for a minutes silence outside Maynooth Garda Station on Sunday 21st June to remember Detective Garda Colm Horkan who was shot dead while on duty in Castlerea on Wednesday 17th June.



Published by: Maynooth Community Employment Project, Unit 5, Tesco's S.C. Carton Retail Park, Maynooth. Phone - 01-6285922
email - office@maynoothcep.com Website: www.maynoothcep.com Registered as a Charity in Ireland RCN # 20100063 - CHY # 21086

MAYNOOTH *Tidy Towns*

CARING FOR OUR ENVIRONMENT

Gold Medal
Winner 2019



Monthly meeting was held by Zoom conference call and it was decided that Maynooth Tidy Towns would restart on 13th June with Saturday clean ups. Volunteers will adhere to social distancing, wear masks, gloves and will use hand sanitiser. A great amount of work was done in different parts of the town. We thank all the volunteers who helped.

As you are aware there will be no National Tidy Towns competition this year, but we would like to ask you to keep Maynooth clean and tidy.

Please buy Bee and Butterfly friendly plants, thanks.

Please see our Facebook page for information about feeding the Ducks and Swans.

Please see poem written by Breedge Conway on Facebook

Please keep safe.

If you wish to contact us on 087-3153189 or on Facebook/Twitter
Richard Farrell - PRO Maynooth Tidy Towns



Mc Mahon's Bar & Lounge

"The food was great and the service was excellent. Ian made us feel very welcome and had great fun with the kids. Would very much recommend for food and has a lovely atmosphere for a few drinks. We will be back."

-Trip Advisor

"The food was very well presented, so tasty and was served on nice hot plates. We absolutely had a great time and would highly recommend. We definitely will be back as the atmosphere here is truly amazing"

-Trip Advisor



Special
mid week
offer for
OAP's

Check out our menu at
menu.mcmahonsbarmaynooth.com
Call on 01 629 1568



EXCITING NEW EDUCATION CENTRE!

North Kildare Further Education and Training Campus

Celbridge FETC (formerly Leixlip VTOS)

**Increase your employment prospects by
upskilling or retraining**

**Enrolling now for 12 week courses
beginning in September 2020**

Courses include:

Computer Studies (including Microsoft Office—
access, excel),
ECDL/ICDL,
Remote working,
Career Preparation,
Job Searching,
Communication Skills,
Collaborating Remotely
English as a Second Language

9 month courses in

eBusiness/ General Studies
Business Studies/ Computer Studies
Healthcare Support
Computer Studies
General Studies (University Access)



Who is eligible: People who are over 21 years of age and in receipt of (or a dependent spouse in receipt of) an eligible social welfare payment.

Free course: The courses are free. There is no charge for books or materials. You will not lose any of your social welfare benefits.

Working: Limited part-time working is permitted in line with the demands of the course.

Extra financial supports: You may be entitled to meal and travel allowances. You may also be eligible to child care support.

Other supports: Free access to career guidance and counselling service.

Adult education: Learn new skills in a supportive adult education environment.

Email: celbridgefetc@kwetb.ie

Mobile: 087 397 7750

Web: www.celbridgefetc.ie

Facebook: @CelbridgeVTOS

Unit A11, M4 Business Park, Celbridge

Maynooth Newsletter

This publication is produced by Maynooth Community Employment Project, supported by the Department of Employment Affairs & Social Protection, which is funded by the Irish Government.

Registered as a Charity in Ireland RCN # 20100063 - CHY # 21086

The opinions and statements expressed in the articles are those of the contributors and not necessarily those of the Editorial Board. All materials to be included in the next edition of the Newsletter should be sent by e-mail or addressed to:

The Editor, Maynooth Newsletter,
Unit 5, Tesco S.C. Carton Retail Park,
Maynooth, Co. Kildare. W23 F9F7

Tel: 01-6285922

E-mail: office@maynoothcep.com - Website: www.maynoothcep.com

Letters to the Editor

Letters to the Editor, for publication, should be sent by e-mail to: editor@maynoothcep.com

Mission Statement

The Maynooth Newsletter is a community focused publication available free to the people of Maynooth. It plays an important role in gathering together, recording and distributing community based news.

We encourage all groups and individuals in the community to submit material to let us know about their activities and any upcoming events.

The Newsletter exists for your enjoyment and we hope you continue to enjoy your monthly read and keep us informed of your activities.

The Editorial Board endeavours to ensure independence and balance in the Newsletter content and reserves the right to omit/edit or abridge material which in its opinion might render the Newsletter as a promoter of sectional interests. In addition we undertake the following:

- In the case of errors of fact we will publish corrections when we become aware of such.
- In the case of unwittingly or unfairly impugning the reputation of any person we hereby offer that person the right to reply.

Any contributor seeking further guidelines in this matter is invited to contact the Editorial Board.

Copy date for receipt of articles is published in the Newsletter. We must stress that material submitted after the copy date cannot be accepted.

Maynooth Newsletter Archives

The management and staff of the Maynooth Community Employment Project started a project in March 2011 to acquire and digitise all available issues of the Maynooth Newsletter dating back to 1975. These back issues along with current issues are available by following the archive link on our webpage -

www.maynoothcep.com.

The Newsletter Archive can be viewed and searched in pdf format. In addition, there exists the capability to be able to search an entire year. Please be aware the single files associated with the year are larger and will take a little longer to load. The Archive provides an important historical footprint of the Town and records the community profile of Maynooth from the mid-seventies to the present day. We hope you enjoy using it and that it brings back memories of people, places and times and that it equally provides an interesting insight to the development of the town and university for newly arrived members of our community.

Editorial Board - Maynooth Newsletter

Maynooth Newsletter

Copy date for the next edition of the Maynooth Newsletter will be Tuesday 21st July 2020

Editorial

While the spring and early summer of 2020 will go down as different in Maynooth it is worth remembering that 485 years ago the Geraldine Castle in Maynooth was under siege from forces representing the British King. Strangely enough the attack in 1535 started on March 14th which is close to the same date the 2020 Covid 19 lockdown began. Back in 1535 when the Royal forces eventually scaled the Maynooth Castle walls it is the reports of what they found that was most interesting. The Ninth Earl had a well-stocked castle in terms of furniture food and drink but he also had an extensive library of books many of them relating to European renaissance culture. One of the books was Sir Thomas More's "Utopia" which was ironic considering that Sir Thomas was the most famous victim of the tyranny of Henry V111 who ordered that he beheaded on July 6th 1535 citing his treason as the reason for his killing. I know that we have many learned readers and for those of you who have read "Utopia" which was first published in 1516 or choose to do so will find that some of More's ideas about how to organise society would not be well received today. However, in 2020 the way we responded as a society to the Covid 19 pandemic is not unlike the ideals that more outlined as the way of life that would have existed in his fictional island of Utopia. As we move on from lockdown we need to bring these positive changes in how we have interacted as a community over the past few months and appreciate that everyone has a place in our society and that everyone benefits when we act in the common good.



1516 edition of "Utopia"

It is hard to believe that on July 13th it will be 35 years since the "Live Aid" concert. While younger readers will not remember this event you will be familiar with the 1984 Christmas single "Do they know it's Christmas" hit which is played every year at that time of the year. Both the hit single and the follow on 1985 "Live Aid" event were the response from the global music stars to the famine in Ethiopia which was described by Michael Buerk the BBC News reporter as the biblical famine of the 20th Century. Of course the leading lights of the Irish music industry at the time played a very significant role in both the hit single and the live aid event. Boy George (Culture Club) of an Irish family background as well as Bob Geldof (Boomtown Rats) and Bono (U2) were involved with Boy George being credited for the idea of the hit single and Bob Geldof was one of the key organisers of the "Live Aid" event. It was a major undertaking having two concerts linking in Wembley in London and the John F. Kennedy Stadium in Philadelphia. From memory I think Phil Collins (Genesis) was the only artist to perform in both venues having performed in Wembley he flew to New York from London by Concorde and then by helicopter to Philadelphia.



In recent weeks there have been a number of special television and other events where the Irish people gave several millions to key Irish charities hit by a fall in their fund-raising in 2020. As a society there is a significant dependence on voluntary fund-raising to meet the cost of what are essential costs in providing much needed services. From voluntary school contributions to funding key services such as mental health supports all Irish Governments seem happy to leave it to public generosity to bridge the shortfalls in financial supports. I believe that how we handled the financial shock of Covid 19 should be the way that Ireland should set the bar for the future funding of all community services. Funding needs to go where it is needed rather than just giving everyone less than they really need. Perhaps key decision makers should read Thomas More's "Utopia" otherwise we will need to arrange a "Live Aid" type event every year to make ends meet.

Paul Croghan
Editor

HOUSE PROUD?



**BIG SPARKLY
HOME LOANS**
APPLY TODAY (045) 879 622 | LIFEKU.IE

Lending criteria, terms and conditions apply. Loans are subject to repayment capacity and financial status.
Warning: If you do not meet the repayments on your credit agreement, your account will go into arrears.
This may affect your credit rating which may limit your ability to access credit in the future. Life Credit Union is regulated by the Central Bank of Ireland.

Life
credit union

A little bit of history. Thomas Swords – Father and Son, 19th century Maynooth Entrepreneurs

While doing research for another Maynooth History project a number of years ago I came across some of the names of the major players who could be described as entrepreneurs of their day and who were involved in business dealings in the town of Maynooth. Two such men were father and son Thomas Swords senior (1749-1826) and Thomas junior (1775-1851) who lived at Crewhill which is situated on the Moyglare Road.

It was sometime later that I discovered that Thomas senior was buried at Ladychapel Cemetery. I recently paid another visit to take down the wording of the very substantial monument that stands in his memory. It is a testament to his goodness in life – based on principles of loyalty, honesty, love of family and philanthropic deeds. The grandeur of the monument also speaks to the wealth and importance of the family. It is interesting that his standing among bankers is given priority.

Beneath this Monument

Repost the mortal remains of

Thomas Swords of Maynooth Esq

Who departed this life on the 18th August 1826

In the 77th year of his Age

In Manners kind and conciliatory

In Disposition humane and generous

In Friendship steady and disinterested

Characterised not less

By the Purity of Principle than by Integrity of Life

He enjoyed the respect and Regard

Of all Banks,

And died deeply regretted by his sorrowing Family

By an extensive Circle of Friends and by the Poor

Who lost in him a bounteous Benefactor

To perpetuate the Memory

Of a revered and lamented Parent

To record the filial Piety

Of his affectionate and afflicted Children

This memorial of his many Virtues

Is inscribed

To the tenderest and best of Fathers

Requiescat in pace

There is a further plain and modest stone slab attached to the wall of the church which refers to an earlier Swords member and it marks the ownership of this plot in the cemetery.

This Monument was Erected by James Swords for him and his posterity 1762.

At the age of 26 Thomas Swords Senior is recorded in the College Account books from the beginning of the establishment of what was then called the Royal College of St. Patrick. He sold a horse, carriage and harness to the College for £14.0.1, he charged £7.10.4 for carriage and storage of freight of coal to Hazelhatch. He provided potatoes and oats to the college for £57.3.5. He rented a house to the college for student accommodation for several years at £36 per year. By 1800 he was selling sheep and cattle to the college which realized substantial sums, £100.13.11 and later for “sundry cattle” he was paid £350.11.3.

Thomas Swords senior was a successful Brewer who lived at Crewhill, Maynooth and was associated with the Catholic Committee that petitioned for Catholic Relief Acts in the early 1790s. (Seamus Cullen). The 1791 Act granted Catholics freedom of worship, to own their own schools, to hold junior public offices and to live in London. The 1793 Act allowed Catholics parliamentary and municipal franchise and allowed for entry to University.

Slater’s Directory of 1846 notes the family, listed under the heading of gentry, as living at Crewhill. By this time Thomas Swords senior had died (1826) and his son Thomas took over the business. He was chairman of the Board of Health in 1832. Maynooth had a temporary cholera hospital and permanent dispensary. The Duke of Leinster was its principal voluntary contributor donating £10.0.0. towards whitewashing and cleaning the habitations of the poor in the town. Thomas Swords and other members of the Board of Health sent an application to the Board of Guardians requesting an advance of £100, they received £80.0.0.

The Brewery was still part of the family business as the Freeman’s Journal of 4 July 1835 notes.

To be Let

The BREWERY and MALT-HOUSE, with suitable Offices, lately occupied by Mr. James Casey, in the town of Maynooth.

The advantages which this Concern possesses would render it an eligible site for either a Brewery or Distillery, have a stream of water running through it, which now turns a mill-wheel of considerable diameter, but could be made applicable to a much greater power of machinery, and have the Royal Canal passing within a few perches of its gate.

Proposals will be received by.... or by Thomas Swords, Esq. Crew Hill, Maynooth

N.B. Two dwelling-houses also to be let in the same town with good lock-up yards, contiguous to said Brewery. (Which was Kavanagh’s Mill and where Manor Mills now stands).

In 1836 he was one of the signatories to a letter to the High Sherriff Co. Kildare requesting a meeting to discuss the “odious imposition of Tithes”. In 1844 he contributed to the fund for the payment of the building of the New Roman Catholic Church at Maynooth. He is reported in June 26, 1846 to have contributed to the widow and orphans of a deceased clergyman in Co. Meath. He also contributed to All Hallows College, Dublin.

Thomas junior was one of the main property holders in Maynooth in 1851 and had a valuation of £55.10.1 for holdings in the Town with the Duke of Leinster at the top of the list with a valuation of £583.10.0. Swords was 7th in the list. We know that Thomas Swords died in 1851. It does not appear that he was married or had children and the subsequent swift auction of his property may also point to this.

Freeman’s Journal 8 April 1851. March 30, at the family mansion, Crew-hill, near Maynooth, at the advanced age of 76, Thomas Swords, ESQ. Universally respected by all who knew him and endeared to his immediate friends by the urbanity of his manner, the benevolence of his disposition, and the strict sense of honour which distinguished all the transactions of his long and blameless life, his memory will be long held in grateful remembrance by the poor of his native parish as well as the surrounding parishes for whose use he bequeathed a large sum of money together with a considerable yearly property in perpetuity.

The Freeman’s Journal of April 12, 1851 reports on an auction to be held on 16 April by order of the Executors of the late Thomas Swords Esq at Crewhill. Consisting of Horn Cattle, Horses, Crops, Farming implements, Manure, Household Furniture, Plate and Plated Ware, Covered and Outside Car and Harness etc. (Further details are given in the advertisement)

The Freeman’s Journal April 24, 1851

Sale of the Estate of the Late Thomas Swords, Esq. The Estate of Harristown will be auctioned on Wednesday, 30th April 1851, at the hour of two o’clock. The Sale will take place on the Lands, that the Purchaser may thereby have an opportunity of forming a correct opinion of the many advantages this well-circumstanced property affords. Harristown contains 135 Irish acres of prime land, is

situate in a peaceful, healthful, and Sporting Country, within two miles of Maynooth and Kilcock, both market and post towns; it adjoins the splendid Demesne of the Duke of Leinster, and possesses numerous local advantages.

As a discretionary power is vested in the executors to dispose of this Property by Public Auction or Private Sale, Proposals (pre-paid) addressed to Doctor O’Kelly, Maynooth, or to Mr. John Casey, Bagnalstown, County Carlow, the Trustees and Executors in this case; or to Mr. Thomas Ardhill, Solicitor 72 Aungier Street Dublin, will be duly attended to ; and should an adequate offer be made the purchase will be declared, if not disposed of previously. John Cogan, Auctioneer, Leixlip.

Recently a map of the property of Harristown was purchased by Maynooth University Library. The estate map was drawn up by Sherrard, Brassington and Green in 1820. It shows the townland of Harristown, Kilcloon, Co. Meath as belonging the Thomas Swords (Senior). Sherrard, Brassington and Green were the leading firm of surveyors in the early 19th century who also drew up a volume of the maps of the “Manor or Maynooth” (including Carton Park) in 1821. The sentiments expressed on the monument in Ladychapel cemetery and the death notice of Thomas junior reflect their shared entrepreneurial skills, political interests and philanthropic endeavours. Sources: Irish Newspaper Archive; Susan Durack: Maynooth: Towards a Community profile, 1795-1911. MA Thesis 2001.

For more about the history of Ladychapel graveyard see http://seamuscullen.net/ladychapel_graveyard.html

Susan Durack



**Thomas Swords monument
at Ladychapel Cemetery**



ARKLE

BAR & RESTAURANT

01 6290909 | info@glenroyal.ie | www.glenroyal.ie



The following article was submitted by one of our readers.
The article was originally published in the June 2020 Edition of the Lee Valley Outlook

History

Mrs Joan Murphy, Maynooth and Sr. Bernard (Murphy), a Macroon and Presentation Nun, Maynooth

Interview by Con Kelleher

Mrs Murphy (75) made contact with Ms Josephine Cronin-Lovell, Lee Valley Enterprise Board, regarding a good news story about a Macroon nun she first met when she was in second class in Maynooth convent. Macroon in this case probably means the wider area. Mother Borgia was a nun and a cousin, and this connection may help to identify Sr Bernard. Sr. Bernard left a life-long impression on her young pupil by giving her a love of books. Joan was anxious to tell the story of great work done by a kindly nun many years ago. In recent times nuns have often had a 'bad press' and little is heard of the fantastic good that they and other religious did. This piece relates a nun's good deeds in the 1950s.

Joan's personal history is fascinating and told beautifully and gives a window into the era in which she was a child. She herself was a surprise as her mother was forty-five when she was a born. Her elder by 61/2 years was not pleased at her arrival. For example, she said that there was no secondary school in Maynooth (population of about 2,000-3,000) in the 1950-60s, just a commerce school that lasted only a few years. It gave it the town the unusual distinction of having national schools and a university but no second level school. St Patrick's College, Maynooth, the national seminary, was cut off from the town and especially young females. The gates were open to the public only during the summer months when the clerical students were home on holidays. Although her mother was a teacher and her father a Garda sergeant, she attended Lucan Vocational School when it had had a two-year cycle. In spite of her love of books and intelligence, it was decided to send her to Lucan Vocational.

Sr. Bernard was a 'phenomenal person', a great teacher and a very kindly pleasant person. She was a tall strong lady with a gentle voice and infectious enthusiasm. She loved books and transmitted that affection to her pupils. Books were then scarce and expensive, and Joan's greatest pleasure was to get a book for Christmas or as a birthday present. Sr Bernard set up a library in the convent school for children and adults - and adults came on Saturdays. She sourced books from Foyles Library, a bookshop in O'Connell Street, Dublin - westerns, detectives, romances and so on. Enid Blyton, Agatha Christie, Conan Doyle, Daphne Du Maurier are some of the authors mentioned and read by Joan. Further, Sr Bernard brought and showed films to her audiences. These measures opened the minds and imaginations of her young charges and townspeople to the vast world outside - its geography, cultures and literature. For a young girl with a love of reading it was like being given the keys to heaven. Joan must have been very keen as Sr. Bernard asked her to help with library

work. Joan was delighted with the 'honour' and appreciated the recognition.

There was a sewing factory in Maynooth, and Joan's ambition was to work there after school. However, at age fifteen, in 1960, Joan's first job was in Foyle's Library and this was arranged by the good nun. Later Joan moved to another book shop in Dublin in which there was a locked cupboard. Book censorship was operating at the time and authors such as Edna O'Brien, Ernest Hemingway, Frank O'Connor, James Joyce and John McGahern had books banned, but some books could be ordered. These 'special' books were kept in the cupboard, literally under lock and key, and Joan was tempted to, but never bold enough, to read secretly the material.

Married in 1965 at age twenty Joan had five children. When circumstances allowed, she worked as a cook/housekeeper to priests first, and later nuns. The nuns even changed their dinnertime to ensure Joan was doing the cooking. As well as being a superb cook, Joan was gifted at dressmaking. She had only some national school sewing lessons and went to the Grafton Academy for night-lessons, after she began working. She made 'every stitch' the children wore including school clothes, and communion and confirmation outfits. When the children were reared, she travelled widely with her husband, Jim, who was an ESB supervisor. New Zealand and Australia were among her destinations. Jim's father worked with the Gore-Booths and later was a manager-cum-valet to Count John McCormack, the great singer. Jim's mother, much younger than her husband, and again later in her life, worked for Lord and Lady Carew of Celbridge, and their daughter Diana Connolly-Carew represented Ireland in showjumping. Joan's children went to university and one is currently an intensive-care nurse and one of our angels of mercy.

Unfortunately, Joan lost Jim, her husband, to cancer six weeks ago and is in mourning. Jim had been very ill and survived some very low points to rally and improve. However, he passed away in February 2020. They had a good life together and she described him as a great husband, father and provider, and she had the consolation of having travelled the world with him. Her children are mostly nearby and are very supportive. Allied to that she has many friends and she enjoys bridge in person and on-line. Covid 19 and cocooning doesn't bother her much and she makes great use of modern technology to keep in touch.

It was a pleasure to talk to Joan, to hear her



St. Patrick's College, Maynooth.



Presentation Convent, Maynooth, (Lawrence Collection, NLI).



Maynooth river with Carton House in the background, (Lawrence Collection, NLI).

story and that of Sr Bernard. She must have 'exchanged atoms' with Sr. Bernard, like one of Myles na gCopeleen's characters, because she sounded so sharp, pleasant and interesting. It would be great to establish who Sr. Bernard was and whence she came, but at this remove, that may not be possible. To hear one great lady, talk about another was uplifting and it was rewarding to put on record the enduring influence that a kindly nun had on a young girl in Maynooth in the 1950s.

The interview was done by phone, and recorded, and amendments were made by e-mail; no bother to the intrepid Joan at 75.



- Supply and Installation of Blinds
- Roller Vertical Venetian Roman Velux
- Home Consultations
- Professional Service with Competitive Prices
- Over 14 years experience in Window Blinds

- Mobile: 085 7338847
- Phone: 01 - 6210100
- Email: gerardmaloneblinds@gmail.com
- www.gerardmaloneblinds.com
- Follow me on facebook



Hegartys Solicitors

Derroon House

(beside Citizens Information Centre)

**Dublin Road,
Maynooth**

**Buying or Selling Property
Re-mortgaging
Wills - Family Law
Debt Collection**

Tel: 01-6293246

Fax: 01-6293247

**Also At: 29 Eaton Square
Terenure
Dublin 6**

Email: info@hegartyssolicitors.ie

Website: www.hegartyssolicitors.ie

MULLIGAN'S GARDEN SHEDS KILCOCK

**ALL TYPES OF TOP QUALITY
TIMBER GARDEN SHEDS**

**ALL TYPES OF HEAVY DUTY
TIMBER FENCING,
DECKING, & SIDE GATES
SUPPLIED & FITTED**

**KENNELS, POULTRY HOUSES,
BIRD TABLES & GARDEN
BENCHES**

Opening Hours

Mon - Fri 8:30 - 18:00

Saturday 8:30 - 15:00

01-6287397

085-2846781



Celebrate Skin, a private skin clinic based in Kilmacredock, Maynooth. We offer a one to one service for our clients.

Stockists of Environ Skincare, Skin Formulas, Heliocare, Advanced Nutrition Programme and Jane Iredale Make Up.

We specialise in advanced skin treatments such as Environ treatments, Skin Formulas peels, CACI microcurrent facials and skin needling. We focus on all aspects of skin health from topical treatments, internal skincare and overall well-being to achieve your goals.

Easily accessible from Celbridge, Maynooth, Leixlip and the N4.

www.celebrateskin.ie | hello@celebrateskin.ie

Facebook and Instagram: celebrateskin.ie | T: 01-9035716

Currently recruiting for a Skin Specialist, please forward your CV to hr@celebrateskin.ie

INFORMATION THAT SHOULD BE DISPLAYED IN EVERY HOUSEHOLD IN CASE OF AN EMERGENCY

WHERE THE MAINS WATER IS COMING IN TO THE HOUSE AND
WHERE THE TAP IS TO TURN THE SUPPLY OFF

WHERE THE TAP /CONNECTION IS TO TURN OFF GAS/OIL OR
WHATEVER HEATING SYSTEM YOU HAVE

BE FAMILIAR WITH ELECTRICAL PANEL AND TRIPSWITCHES. IN
YOUR HOME

ALWAYS HAVE AT HAND PHONE NUMBERS FOR THE FOLLOWING:

EMERGENCY SERVICES

PLUMBER

ELECTRICIAN

ALARM PROVIDER

BE AWARE OF YOUR EIRCODE AND KEEP IT HANDY
YOUR EIRCODE CAN BE CHECKED AT [HTTPS://FINDER.EIRCODE.IE](https://finder.eircode.ie)

HAVE A FIRE EXTINGUISHER AT HAND ESPECIALLY IN YOUR
KITCHEN. A FIRE BLANKET IN THE KITCHEN IS ALSO ESSENTIAL

MAKE SURE TO HAVE SMOKE ALARMS ON EACH FLOOR OF YOUR
HOME AND BE SURE TO CHECK IF THEY ARE WORKING AT LEAST
EVERY MONTH.

CARBON MONOXIDE ALARM IS A MUST IN EVERY HOME

Peace

I heard a little rumour,
I don't know if it's true,
That the world is going to be at peace,
for at least a month or two.

I heard that folk must stay at home...,
And spend time with their kin,
Slow down, relax and take a breath,
And find some peace within.

And though we may be worried,
About money, jobs and bills,
We will notice beauty everywhere,
Blue skies, fresh lakes, green hills.

And when a month or two is over,
And we can all go back to our lives.
People will show gratitude,
That their loved ones. all survived.

By M. Murray

Blind Joe

He lived way up among the woods
Which clothe the blue slopes of the Catskills
A striking white-haired fellow
You'd take for Rip Van Winkle
Except that Joe's voice predicated
An expat from Roscommon or Mayo
Who out-daring most of his countrymen
Had ventured far beyond the city
And following pioneer tradition
Took up farming in a modest way
Till fatefully glaucoma struck him
But could not make him quit his homestead

Each summer the latest generation
Of New York's Irish immigrants
Went to the Catskills for a week or two
And always after the swimming
The shuffleboard the visits to the creek
The unpretentious wholesome meals
The drinking and the dancing in the bars
We'd make a pilgrimage to Blind Joe's farm
Driving up leaf-shadowed roads
To wonder at the guideline he had rigged
Between the cowshed and his home
And talk to him of country things

And while he listened in the open air
Blind Joe's sunburnt face would be alight
No doubt because our untroubled voices
Brought some long-lost country crossroads back
Finally when conversations dwindled
The visitors as they said goodbye
Recollecting dead or distant fathers
Pressed money into Blind Joe's hand
Then drove off heartened by a courage
Greater than ancient Oisín's in Elphin*
That once the tourists had departed
Would face alone the winter's onslaught

I like to think that Joe still lives
Above East Durham on the farm he cleared
Out of the virginal broad-leaved woods
And that he'll probably turn up one day
Just like Oisín or bewildered Rip
Seeking the world he left behind
And wonder where the glad-voiced lads and girls
Part Irish part American have gone
And tell strange tales to thrill the listener's ear
For some of us recall a Land of Youth
Where summer was unending and the hurt
That drove us from it is at last forgot

* See the poem *Is Fada Anocht i n-Ailfinn* ("Long is Tonight in Elphin") in which Oisín bewails his old age and the loss of his Fenian companions.

By Colin Scott

Thinking of replacing your PVC Windows?

WHAT TO DO NEXT

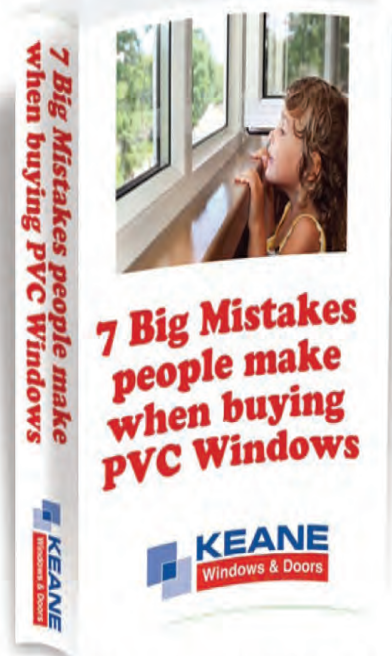
Download Your Free Guide Book:

'7 Big Mistakes people make when buying PVC Windows'.

In this book you will learn:

- Key Questions to ask my window installer before engaging them
- 7 Critical mistakes everyone makes
- 3 Steps to a perfect window solution from start to finish

It's easy to download,
Simply visit www.keanewindows.ie
Showrooms open 7 days a week



Call 01-6203232

To an Unknown One

When shall we meet,
Unknown intruder on my dreams,
Dark, formless one?
Nor you nor I can say
How in the web of time
The darting hands will make
The threads to meet
And eye to drown in eye
With trembling recklessness...

I call your shade
Out of the chambers of my heart
Where nothing lives but hope;
I call your name
Out of the caverns of my mind
Where nothing dies but certainty,
Kingfisher Child, blue-green
Immortal glimpse of happy isles,
New-risen moon.

You shall not find in me
My obscured self,
But I will seem
Such as Ulysses to Nausicaä seemed
When washed like driftwood on her father's shore
Or war-spent Ossian to the Gold-haired Niamh
When riding from the ocean's foam
She chose him from the race of men –
In you I'll find my youth again.

There is no eye can scan the night
And say in what far place or time
That which the middle sister weaves
Will be revealed,
And so I weave this other web
In which beside lake reeds you kneel,
Looking downward with a dreamer's stare.
My face is mirrored on the sandy bed:
I come, my love, out of the shimmering air!

By Colin Scott

Photos from our Readers



Above: Family of Swans on the Canal at Maynooth Harbour. All 7 cygnets have survived and appear to be thriving. The swan family have been a great attraction for people on their daily walks during the lock down.



Left: A young fox cub helps itself to the cat's breakfast early Sunday morning at a house near Bond Bridge in Maynooth.



HAY FEVER

Hay fever is an allergic reaction to pollen, usually when it comes into contact with your mouth, nose, eyes and throat. Pollen is a fine powder from plants.

Hay fever is usually worse between late March and September, especially when it's warm, humid and windy. This is when the pollen count is at its highest.

Hay fever symptoms

Symptoms of hay fever include:

- sneezing and coughing
- a runny or blocked nose
- itchy, red or watery eyes
- itchy throat, mouth, nose and ears
- loss of smell
- pain around your temples and forehead
- headache
- earache
- feeling tired

Asthma and hay fever

If you have asthma, you might also:

- have a tight feeling in your chest
- be short of breath
- wheeze and cough

Hay fever may last for weeks or months, unlike a cold, which usually goes away after 1 to 2 weeks.

Hay fever treatment

There's currently no cure for hay fever and you can't prevent it. But you can do things to ease your symptoms when the pollen count is high.

To ease your hay fever symptoms:

- put Vaseline around your nostrils to trap pollen
- wear wraparound sunglasses to stop pollen getting into your eyes
- shower and change your clothes after you've been outside to wash the pollen off
- stay indoors whenever possible
- keep windows and doors shut as much as possible

- vacuum often
- dust with a damp cloth
- buy a pollen filter for the air vents in your car
- buy a vacuum cleaner with a special HEPA filter (these can trap pollutants)

To ease your hay fever symptoms, do not:

- cut grass or walk on grass
- spend too much time outside
- keep fresh flowers in the house
- smoke or be around smoke – it makes your symptoms worse
- dry clothes outside – they can catch pollen
- let pets into the house if possible – they can carry pollen indoors

When to see a pharmacist

Speak to your pharmacist if you have hay fever. They can give advice and suggest the best treatments. These include antihistamine drops, tablets or nasal sprays. These treatments can help with itchy and watery eyes and sneezing or a blocked nose

When to see a GP

If you are not seeing any improvement from the pharmacist's treatment, your GP may be able to help.

Visit your GP if:

your symptoms are getting worse
your symptoms don't improve after taking medicines from the pharmacy

Treatments from your GP

Your GP may prescribe steroids. If steroids and other hay fever treatments don't work, your GP may refer you for immunotherapy.

This means you'll be given small amounts of pollen as an injection or tablet. This will slowly build up your immunity to pollen. This kind of treatment usually starts in the winter about 3 months before the hay fever season begins.

Source: www.hse.ie



Kildare Planning Applications for Maynooth Area

Planning Applications received from 28/05/2020 to 28/06/2020 Information from Kildare County Council Website

App. Num	Authority	Applicant Name	Development Address	Application Date
20659	Kildare County Council	David Dunne,	Clonfert South, Maynooth, Co. Kildare.	24/06/2020
20637	Kildare County Council	Damien Doyle	Moyglare Nursing Home, Moyglare Road, Maynooth, Co. Kildare.	22/06/2020
20585	Kildare County Council	Brian Lavelle	Leinster Park, Maynooth, Co. Kildare.	10/06/2020
20557	Kildare County Council	Heathcote Holdings Limited	Parklands Grove, Railpark, Maynooth, Co. Kildare W23 V5D4	03/06/2020
20551	Kildare County Council	Laura Jayne Halton	Laragh, Demense, Maynooth, Co. Kildare.	02/06/2020

Covid-19: Arising from the Covid-19 pandemic, the Planning and Development Act 2000 was amended on 29 March 2020 resulting in the extension of certain timelines in the planning process including submission and decision dates. The Online Planning system does NOT take account of the revised dates.

Due to the current restrictions in place to combat the spread of the COVID-19 Virus we are unable to print & deliver the normal edition of the Maynooth Newsletter. The hope going forward is to produce this Online Version to keep people informed. All the community of Maynooth are invited to submit relevant content to: office@maynoothcep.com as we progress through these extraordinary times. If we mind ourselves and each other we will get through this and come out the other side a stronger community & country. Please bear in mind as the situation progresses we may be unable to produce the Online version.



Royal Canal Notes

July 2020

Education ~~ Heritage ~~ Recreation

BOATING ON THE ROYAL CANAL

For some time now navigation of the Royal Canal has been suspended in line with "Crona Virus" health directives, but also because of water shortages due to the good weather which prevailed recently.

The good news is that Waterways Ireland has advised that the suspension will be lifted at the end of July next allowing navigation to recommence. It will be nice to see a few boats back in the water.

SWIMMING ON THE ROYAL CANAL

Swimming in the Royal Canal is prohibited for health and safety reasons by Waterways Ireland and this is obvious by the strategically placed signs along the length of the waterway, some of which have been recently vandalised locally. It seems, however, that because of the good weather in May and early June this by-law was ignored and a large number of teenagers decided to swim at Jacksons Bridge near Maynooth.



Jackson's Bridge near Maynooth

Apart from the health issues of swimming in the canal no social distancing was in operation and the size of the group, on this occasion vastly exceeded Crona Virus group restrictions.

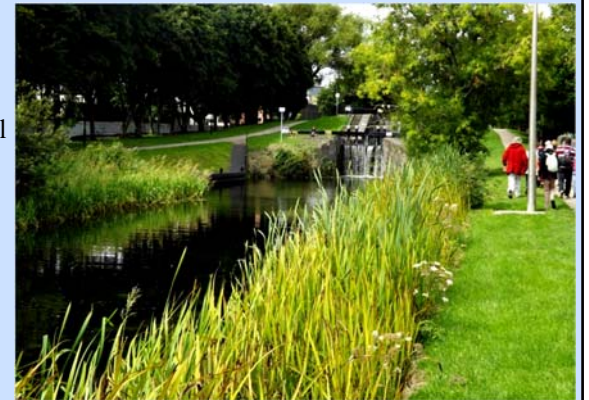
Yes! I know your parents swam in the canal and nothing happened to them so why shouldn't you? The reason is simple. In the past there was more boat traffic on the canal and as a result much less rodents. These creatures carry a number of diseases, the most worrying of which is WIELS disease. While not usually fatal it can be, it caused the death of former British Olympic oars man Andy Holmes in the recent past.

The symptoms of this disease are not pleasant and it can take quite some time to recover from.

On the occasion mentioned a number of the teenagers dived into the lock itself. This is foolhardy. The Canal is two hundred years old and the locks were not designed with built in ladders. A lock gate was also opened on this date. This is totally unacceptable behaviour since even boaters have to get advanced clearance from Waterways Ireland to open lock gates while sailing on the canal.

HERITAGE WEEK 2020

Heritage Week 2020, which runs from the 15th. - 23rd. August 2020 has been modified this year as a result of Covid-19 restrictions. It will be mainly on line this year with virtual talks, walks and other offerings available. There is also an opportunity to record your heritage week memories on the Heritage Week web site <https://www.heritageweek.ie>



Walkers On the Royal Canal at Mountjoy.

We in the Royal Canal Amenity Group have always supported Heritage Week with talks and walks on both the Royal and Grand Canals together with other venues, and this year is no exception.

Author Peter Clarke and group secretary Niall Galway are currently working on presentations, ably assisted by group historian Derek Whelan. It is a big change from previous years but such are the difficulties with restrictions on group gatherings social distancing and wearing of masks while in groups. This made the changes necessary for this year at least.

Maynooth Senior Citizens Committee

Isn't it just encouraging to see our community/country opening up, albeit cautiously and I take this opportunity to wish all our business people well. It is local business who have supported organisations like ours over many years and now it is our turn. So I urge you all to shop local where you can.



I mentioned last month that I hoped we could have a small meeting after June 8th. We held an executive committee meeting on June 14th to decide a strategy going forward. Our full committee could not meet as government guidelines only allowed for up to six people in an enclosed space. In our risk assessment we considered the vulnerable age group with whom we work, space, transport, distancing etc, within the guidelines. In the interest of safety and best practice it was decided that it would be unwise to reopen the club at this time.

While we appreciate the importance of social inclusion and the direction in which loneliness can take us, we have to balance that with the physical safety of all concerned. We will keep the situation under review and as our club normally closes for August, we will revisit this at our meeting in September.

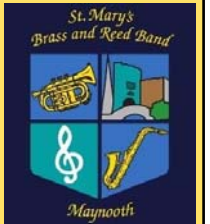
Meanwhile older people can still make contact with us and I would ask all those good neighbours, who were so wonderful to our older people during lockdown, to continue that friendship a while longer. If you are concerned about an older person living alone you can contact any committee member.

Finally, may I express our sincere sympathy to the families of Pauleen O'Brien, Christopher Smith and Eddie Tracey on the passing of their loved ones.

Suaimhneas agus Siochain Doibh.

Josephine Moore.

ST MARY'S BRASS & REED BAND



Things are still very quiet on the Band front with all the restrictions in place so not a lot to report this month. We were really disappointed to have to cancel our planned Concert with the West Michigan Band from the USA in the Glenroyal Hotel on 1st July but hopefully they will make the trip over next year.

We will be getting back to small rehearsals over the next few weeks with the aim of doing something somewhere for Culture Night on Friday 18th September but we are still working on a venue as everything depends on the restrictions in place at that time but we hope to have more news in next month's issue.



Junior Band

With the current explosion of new houses in Maynooth the Band will be launching a recruitment drive for both beginners and experienced musicians next September. We already have the nucleus of a Junior Band (see photo) but we know there are lots of budding and talented musicians in the town so in next month's issue we will be giving full details of what we have planned. In the meantime if you are really interested please mail sec@stmarysbandmaynooth.ie or call 087 2537 906 for further details.

DIY Page

Things you can do with left over Wood Pallets (Source: whouohu.com)



Amazing things you can do with Tyres and left over Concrete Blocks (Source: bing.com)



Oliver Reilly

Leinster Street, Maynooth,
Co. Kildare
Mobile 086 8105581 - 01 6289452
24 Hour Service



**Undertakers and
Complete Funeral Furnishers**
Wreaths, Headstones,
Mourning Coaches
Undertakers to
Maynooth Mortality Society
(Funeral Parlour Free to Society Members)

Main Office, Naas Tel: 045 868230
Paul Reilly Mobile: 086 8105581

*Funeral Home
The Harbour
Leinster Street
Maynooth*



Mary Cowhey & Company Solicitors

Suite 2/3 Manor Mills
Maynooth
County Kildare

Motor & Work-Related Accidents

**House Purchase/Sale
Wills, Probate
&**

**Administration of Estates
Family Law, Divorce, Separation**

Telephone: 6285711
Fax: 6285613

E-mail: info@marycowhey.com
www.marycowhey.com

LIAM DUFF CRASH REPAIRS



Call (01) 628 7434

e-mail: info@liamduffautos.ie
web: liamduffautos.ie

VEHICLE RECOVERY CRASH REPAIR TYRE SERVICES

24 Hour Vehicle Recovery 087 257 9400
Crash Repairs CSS Approved 087 929 1719
Tyre Fitting Service Laser Wheel Alignment Puncture Repairs

**Complimentary Ozone Sanitisation
before & after repair.**

Liam Duff Crash Repairs, Gragadder, Kilcock, Co. Kildare



BRADLEY Plumbing & Heating

No Job too Small

**Showers Replaced
Showers Installed - Triton, Mira etc.
Kitchen Taps/Basin Taps
Outside Taps Fitted**

**Boiler Installation
Cylinders, Immersions, Radiators
Attic Tanks, Basins
Baths & WC Replaced etc.**

**Bathroom Renovations
Shower Doors, Shower Screens Fitted**

**Paul Bradley
087 959 8840**

01-629 0370
Unit 3, Fagan's Lane, Maynooth
Main Street, Kinnegad
info@gildeasopticians.ie
f Gildea's Opticians
www.gildeasopticians.ie



FREE SIGHT TEST and SPECTACLES
(or allowance towards upgrades for spectacles or contact lenses)
with Medical Card or PRSI



Appointments Monday - Saturday
Late Night - Friday 9:30am - 8:00pm
Opening hours 9:30am-6:00pm Saturday until 5:30pm

Maynooth Community Library

Maynooth Library brings you an
uplifting and interactive storytime
with Helena Byrne on 17th July
Join Helena for this extra special
storytime session on Zoom.
Discover characters new and old and
help bring them to life with
movement and song.

Call 016285530 or email
maynoothlib@kildarecoco.ie
with "Helena Byrne" in the subject line
to book.

**11am, Friday 17th July 2020
Fun for all the family,
but particularly ages 4 – 7**

MOORE McGIVERN SOLICITORS

**Expert Advice
Personal Service**

**Tel: 01 6293941
Mobile: 087 2359663**

E-mail: info@mooremcgivernsolicitors.ie

- Conveyancing/Property Law
- Accident and Personal Injuries Claims
- Family Law, Divorce, Separation
- Wills, Probate and Administration of Estates
- Employment Law

*In contentious business a solicitor may not calculate
fees or other charges as a percentage or proportion of
any award settlement*

Maynooth Community Employment Project

Secretarial Services

**Unit 5, Tesco Shopping Centre Maynooth
(Beside Post Office)**



Tel: 01 6285922
Email: office@maynoothcep.com



Opening Hours for Public
Monday—Friday
9.00am – 4.30pm

LETTERS

TYPING

PHOTOCOPYING

SCANNING TO EMAIL

CVs

A3/A4 LAMINATION

PRINT FROM EMAIL

Other Printing Services Available on Request



ZERO WASTE MAYNOOTH

**It's Plastic Free July! A month when
millions of people around the globe try to
reduce their use of plastic.**

But this year is different as Covid-19 continues to impact our lives. Some of us might not be heading out as much and those that do might find that reusables aren't as welcome as before. (As this article was being written, a statement was due to be released which was signed by over 100 scientist from various fields across 18 countries which states that reusables are safe during the pandemic as long as basic good hygiene is followed).

So how can we take part in Plastic Free July in this altered world?

One habit that most people developed during the lockdown was doing the Big Shop. Nipping into the shops for a few bits just wasn't worth the queues. Planning the Big Shop can really help cut down on plastic and food waste. Mapping out a food plan for the week can mean that you don't get tempted by the special offers that often end up languishing at the back of the fridge and often come double wrapped in plastic.

Another way to cut down on plastic coming into your home is the pledge to use what you have before buying more – have you half bottles of shampoo/conditioner/bodywash cluttering up the bathroom? While you are using up what you have, you can be researching alternatives – Green Outlook (Kildare based business) and Janni Bars (based in Clonfert) stock shampoo bars and The Healthy Way in Leixlip stocks refills of bodywash, hand wash, fabric conditioner and washing up liquid.

Although Zero Waste Maynooth are not running events at the moment, it is still possible to get your dried goods from Bare Necessities. They are doing a collection service in Maynooth on the second Saturday of each month. We will be popping a reminder up on our page.

Throughout the month we will be posting ideas and tips for Plastic Free July on our social media.



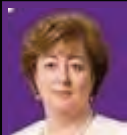
LIFFEY MEMORIALS

- ◆ Headstones
- ◆ Grave Cleaning
- ◆ Additional Inscriptions

**SERVICING
LARAGHBRYAN
CEMETERY
MAYNOOTH**

01-8237710

**See our large range of stones on
www.liffeymemorials.ie**



Catherine Murphy T.D. Social Democrats, Kildare North.

Constituency Office ph: 01-6156625 Dáil Office ph: 01-6183099 - e-mail: catherine.murphy@oireachtas.ie

Grand Canal Greenway Projects Update

Catherine Murphy asked the Minister for Culture, Heritage and the Gaeltacht, Josepha Madigan, to detail the funding allocated to the Royal and Grand Canal Greenway projects; the progress made to date on works; and the expected completion date of works of each stage and or section of these projects.

The response was as follows:

The Department for Transport, Tourism and Sport has allocated €12.3m to the Royal Canal Greenway since 2012. This Greenway is expected to open this year from Maynooth in County Kildare to Cloondara in County Longford and become the longest stretch of Greenway in the country at 130km long, including the Longford Branch. There is still some work on installation of ancillary infrastructure, signage and marketing to be completed. The tenders for this work have had to be postponed due to COVID-19 restrictions.

Development of the urban section of the Royal Canal is funded by the National Transport Authority (NTA). A number of sections along this urban stretch have been completed; from Spencer Dock to Sheriff Street and from Ashtown to Castleknock. Works have commenced on the stretch between these two completed sections and consultations are ongoing for the final section from Castleknock to Maynooth in County Kildare.

Grand Canal

In 2019, the Department for Transport, Tourism and Sport (DTTAS) awarded €2.35m to Offaly County Council for the Tullamore to Daingean section of the Grand Canal and a further €1.7m to Kildare County Council for construction of the Grand Canal Greenway section between Aylmers Bridge and Sallins. Construction on these sections is due to finish in 2021 but COVID -19 may impact the completion dates.

The Department for Transport, Tourism and Sport also provided funding of €415,321 for construction of the section known as Arthur's Way in 2014/15. The section of the towpath between Blackhorse and the 12th lock in the Dublin area has been completed and planning has been secured for the stretch from the 12th lock to Hazelhatch in Kildare, although no funding has been secured to date. The remaining sections of the Grand Canal towpath in the urban area have yet to secure planning and funding.

On the same day, Catherine asked the Minister for Transport, Tourism and Sport Shane Ross the funding allocated to the Royal and Grand canal greenway projects; the progress made to date on works; and the expected completion date of works of each stage and or section of these projects.

The Minister's response was as follows:

Department has allocated €12.332 m to the Royal Canal Greenway since 2012. This greenway is expected to open this year from Maynooth in County Kildare to Cloondara in County Longford and will become the longest stretch of Greenway in the country. It will be 130km in total length, including the Longford Branch. There is still some work on signage and marketing to be completed. The tenders for this work have had to be postponed due to COVID -19

My Department awarded €2.35m to Offaly County Council and €1.70m to Kildare County Council for construction of the Grand Canal sections outlined below. My Department also provided funding of €415,321 for construction of the section known as Arthur's Way in 2014/15.

Grand Canal Greenway- Tullamore to Daingean and Lough Boora	€2.35m	Waterways Ireland/ Offaly County Council	Parts of most strategic importance and economic significance and also priority sections for Local Authority
Grand canal Greenway - Kildare section as far as Sallins	€1.7m	Waterways Ireland	Aylmer Bridge to Sallins, builds on Arthurs Way

Construction on these sections is due to finish in 2021 but COVID 19 may impact the completion dates. These two Greenways are strategically important national greenways with the

Royal Canal Greenway also forming a section of the Dublin Galway Greenway. It is our intention over the coming years to complete the Grand Canal Greenway as funding and planning allows.

In relation to Urban Greenway sections of both the Royal and Grand Canals, these are funded and managed by the National Transport Authority (NTA). Noting the NTA's role, I have referred your question to the NTA for a more detailed reply.

Catherine has received the response from the NTA and the order for 41 InterCity railcars was placed in December 2019. The first units are scheduled to be delivered in Q1 2022. It is expected that the final units would be delivered in Q3 2022. The contract value is €149.7 million, therefore the unit cost equates to approx. €3.65 million.

Iarnród Éireann are currently undertaking a procurement process for a framework for the supply of new DART fleet to support the expansion of the DART network within the Greater Dublin Area. Tenders are expected to be returned in Q3 2020 with an initial order to be placed early next year.

Concerns re Childcare provision in North Kildare

Catherine Murphy TD asked the Minister for Children and Youth Affairs the measures she is taking to address the significant shortfall in childcare spaces in Maynooth, Celbridge and Kilcock, County Kildare.

Each year Pobal conducts research on behalf of my Department to examine a number of factors related to early learning and care and school age childcare services in Ireland, including the monitoring of capacity. The Early Years Sector Profile report for the 2018/2019 programme year, provides my Department with valuable information including issues of capacity. The report indicates that existing childcare provision nationally broadly meets current needs in terms of capacity, whilst recognising that small pockets of under supply exist within this.

Early learning and care and school age childcare providers (both community and private) operating in the Maynooth, Celbridge and Kilcock areas completed the survey which informs the sector profile. From their responses at the time of the survey there were 1,642 children enrolled, with 87 vacant places and 190 on the waiting lists to be reconciled. Pobal cautions that its data on waiting lists cannot by itself be used to inform capacity decisions as parents often place their children on more than one waiting list.

Under First 5, and also in preparation for planned investment under the National Development Plan, my Department will be undertaking research to consider in detail the capacity needs of each area across the country. I recognise that capacity constraints remain in some areas and my Department is actively seeking to further increase capacity through a range of measures including opening up regulation and funding schemes to paid, non-relative childminders.

Finally, if the Deputy is aware of any specific cases of parents having difficulty accessing childcare places, they could make contact with their local City or County Childcare Committee who will be pleased to assist them

Tourism in Maynooth

Catherine Murphy TD asked the Minister for Public Expenditure and Reform the number of persons who visited Maynooth Castle and Castletown in each of the years 2017 to 2019, in tabular form.

The 2019 visitor numbers for Maynooth Castle and Castletown are in the process of being compiled and audited. As such, fully verified visitor numbers to these sites last year are not yet available. The 2017 and 2018 visitor numbers are:

Site	2017	2018
Maynooth Castle	23,315	22,946
Castletown House	32,493	27,760
Castletown Parklands (including Castletown House visitors)	680,000	642,278



Catherine Murphy T.D. Social Democrats, Kildare North.

Constituency Office ph: 01-6156625 Dáil Office ph: 01-6183099 - e-mail: catherine.murphy@oireachtas.ie

Adoption of Proposed Variation No. 1 to the County Development Plan 2017 – 2023 by Kildare County Council

The Social Democrat Group in Kildare County Council voted in favour of adopting the Variation to the County Development Plan 2017 – 2023. The variation was adopted by 20 votes for and 19 against.

Having reviewed the County Development Plan Variation figures in relation to the percentages of allocated growth per settlement and actual dwelling targets, which was previously circulated to you and contained within the Chief Executives Report, I think that another relevant metric might be to display the population growth targets (to 2026) per settlement as a percentage of the 2016 Census of population. You will see from the attached that all towns and villages are expected to see growth rates of in excess of 12% and a significant number will see growth in the high teens and even into the 20%+ range.

Proposed Variation No. 1 of the Kildare County Development Plan 2017-2023 which was published on 9th of January 2020.

Proposed Variation No. 1 is statutorily required to align the County Development Plan with the Regional Spatial Economic Strategy. One of the principal purposes of the variation is to designate settlements (in Co. Kildare) in accordance with the RSES as Self-sustaining Growth Towns, Self-sustaining Towns, Towns, Villages and rural areas. It should be noted that the RSES identifies Regional Growth Centres and Key Towns in the Region and it is a function of the CDP to designate all other settlements in the hierarchy. It should be further noted that the Large Growth Town is a designation from the Regional Planning Guidelines which have been superseded by revised designations in the Regional Spatial and Economic Strategy from EMRA.

The NPF and its Roadmap has set out a plan for Ireland until 2040. This seeks to encourage a more balanced form of development across the State. The net effect of this on Kildare is to provide for population increase over the plan period but at a reduced level as the NPF takes effect Section 5.7 of the Regional Spatial and Economic Strategy (RSES) states that 'There is a further allowance of transition population targets in National Policy Objective (NPO) 68 by way of up to 20% of the targeted growth in the city being transferred to other settlements in the MASP'. It is further stated that 'This shall apply only to the three Metropolitan Key Towns in the MASP namely Bray, Maynooth and Swords, and only if they can demonstrate compact growth on high capacity planned or existing public transport corridors'.

The RSES sets out that the determination of population targets for local authorities within the MASP in accordance with the NPF and RSES, including the population targets for the City and the Metropolitan Key Towns, should be agreed in consultation with the MASP Implementation Group to inform the preparation of the core strategies of the relevant city and county development plans.

Arising from NPO68 of the National Planning Framework there have been discussions, but no decision of the Eastern Midlands Regional Assembly of any revised allocation and/or redistribution for Kildare or Maynooth. It is therefore considered that any additional population allocation for the town of Maynooth be incorporated into this or future County Development Plans at a later date following completion of the process to agree these figures.

CE Recommendation

Proposed Amendment No. 2 is adopted as proposed with any additional population redistribution addressed once agreed.

Following the process to vary the County Development Plan the Council will proceed to prepare a suite of local area plans which will include the Joint Maynooth LAP, prepared in conjunction with Meath County Council in accordance with RPO 4.35 of the RSES.

A number of supporting reports/assessments will be prepared to inform the preparation of the Local Area plan including an Infrastructure Assessment to detail the capacity of physical infrastructure such as roads, water services etc.

A Social Infrastructure Audit will also be carried out which will examine the current availability and capacity of social infrastructure facilities in the area, to determine future requirements and make recommendations on priority areas for future investment to ensure housing is delivered in tandem with the necessary social and physical infrastructure.

Similarly, a Strategic Transport Strategy will be undertaken which will inform zoning decisions for the forthcoming LAP in tandem with solutions for improving public transport, cycling and permeability throughout the town.

Appropriate consultation with elected members and all relevant stakeholders and interested parties will take place at all phases of the plan preparation.

The revised population projections as reflected in Variation No. 1 of the County Development Plan make provision for ca. 2,000 units per year across the county to the end of the Plan period which is significantly higher than the level of average house delivery of the ca. 1,186 units over the past 4 years

(2016-2019) see table below.

	2016	2017	2018	2019
Q1	122	195	244	397
Q2	154	215	271	393
Q3	142	259	325	488
Q4	220	316	381	623
TOTAL	638	985	1221	1901

It is also noteworthy that parts of County Kildare are among the top 5 areas for housing completions in the Country in Q1 of this year

Nuala Killeen said:

"We sought to keep the needs of our communities in mind and to support sustainability in our towns. The reduction in figures adopted by the variation is supposed to give an opportunity for much needed infrastructure to catch up. I noted that Strategic Housing Developments have had the most impact on our communities and the physical and social infrastructure in Kildare has been deficient for decades even prior to the SHD process. We took the decision as we are reluctant to impact the progress of LAPs, which is an important function of the councillors and are equally reluctant to defer powers to the Minister that brought us the SHD process" (If the variation fell the process might have gone forward for a Ministerial Direction).

Aidan Farrelly said:

"By supporting the Variation before us today, it offered Councillors an opportunity to oppose the housing-first, infrastructure-last policy that has failed our communities until now. Each town has issues with water, roads, bridges, public transport and improved safe-cycling infrastructure that can no longer sustain upgrades being optional.

"Whether this variation stood or fell today, Government housing policy is wholly deficient. Social infrastructure is needed e.g. healthcare, childcare and appropriate educational facilities should be prioritised in Kildare,

based on the most up to date census figures"

Chris Pender said:

"We urgently need to address the many social infrastructure deficits in our communities and encourage the place making and wellbeing of our communities. It's not enough to provide units of housing, our communities are crying out for the basics that should be a given in any modern society. We also need to ensure we encourage planning that supports our most vulnerable"

Bill Clear said

"This variation does not reduce any permissions granted but not yet commenced and we should look at permissions granted but unused with a view to downzoning land not utilised." Said Cllr Bill Clear

Variation (Variation No. 1) of the Kildare County Development Plan 2017-2023.

At its adjourned meeting on 9th June 2020, Kildare County Council adopted a Variation (Variation No. 1) of the Kildare County Development Plan 2017-2023. The adopted variation responds to the recent changes in national and regional policy, namely the publication of Project Ireland 2040: National Planning Framework (NPF), The Implementation Roadmap for the National Planning Framework and the Eastern and Midland Regional Assembly (EMRA), and the Regional Spatial and Economic Strategy (RSES).

The RSES will be implemented in policy by way of the County Development Plan and Local Economic and Community Plans (LECP). The RSES will be realised by the delivery of European and national funding that will achieve the Regional Strategic Outcomes (and NPF National Strategic Outcomes) expressed in the Strategy. These funds will focus on the priorities and key aspects of the RSES to sustainably grow the Region to 2031 and beyond.

A Metropolitan Area Strategic Plan (MASP) forms part of the Strategy, which identifies several large scale strategic residential and economic development areas, that will deliver significant development in an integrated and sustainable manner in the metropolitan area, of which the area of Maynooth, Leixlip, Celbridge and Kilcock forms part (northeast of the county).

The Planning and Development Act 2000 (as amended) places an obligation on the planning authority to prepare a 'core strategy' which shows that the development objectives in the plan are consistent, as far as practicable, with national and regional development objectives set out in the National Planning Framework and the Regional Spatial and Economic Strategy. Chapters 2 and 3 set out the Core Strategy and Settlement Strategy for County Kildare.

There is a legislative requirement to respond to recent changes in national and regional policy

- Align the CDP with National Planning Framework (NPF) in 2018
- NPF Roadmap and
- The Regional Spatial and Economic Strategy (RSES) adopted by the Eastern and Midland Regional Assembly (EMRA) in 2019

The County Development Plan is due for a full review in early 2021 at which stage consideration will be given to settlement boundaries etc for towns/villages and submissions regarding land use zoning can be taken into consideration during this process.

Land-use zonings for towns which are above the threshold for mandatory Local Area Plans will be addressed through the specific LAP.

(Continued on page 18)



Catherine Murphy T.D. Social Democrats, Kildare North.

Constituency Office ph: 01-6156625 Dáil Office ph: 01-6183099 - e-mail: catherine.murphy@oireachtas.ie

(Continued from page 17)

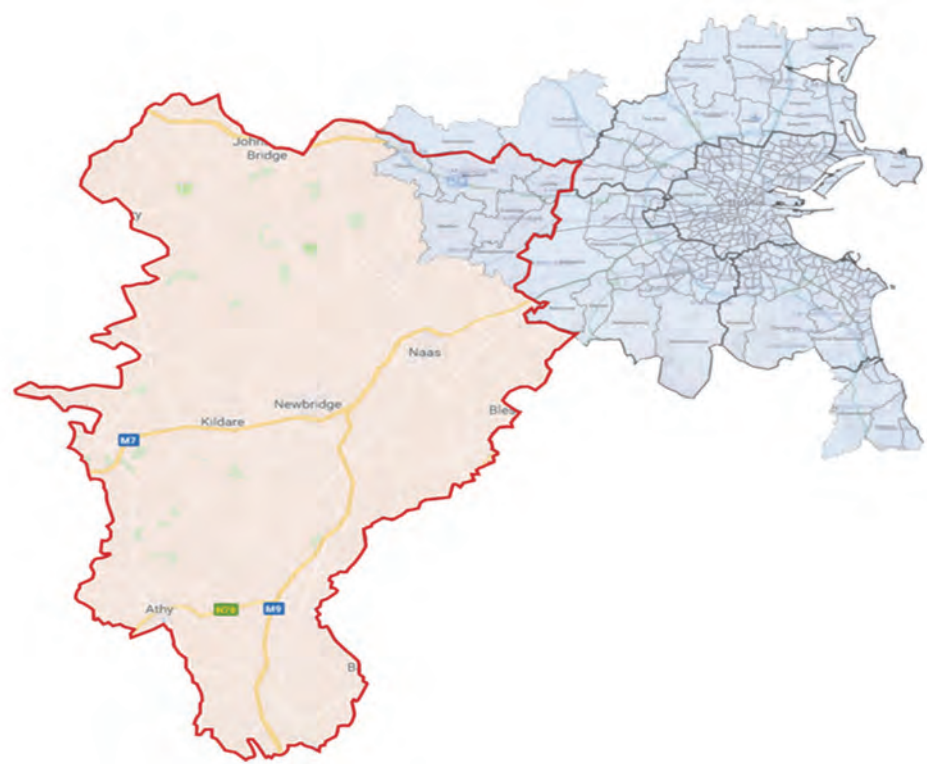
	2016 - 2023 (current CDP)	2016 - 2026 (as per NPF Roadmap)	2026 Target inc. 25% headroom
Population target	253,552	254,000	261,870
Housing unit target	32,497*	11,250	14,060

County Kildare was identified as having above national average growth & therefore is allowed to make provision for up to 25% headroom.

- * RPG Housing Target
- Kildare’s allocated growth from 2016 to 2026 as per NPF Roadmap = 39,370 persons

Note; This is based on the higher population range & includes 25% headroom This equates to approx. 14,060 housing units (up to 2026) Based on a 2.8 person occupancy (average occupancy rate for Kildare in 2016 Census)

Area of Kildare within MASP



- Census 2016 Population for this area is 62,449 = 28% of County population
- Possible additional allocation for Key Town of Maynooth from Dublin City & Suburbs allocation (NPO 68) -Ca. 11,000 persons = additional 3,900 units
- Set out revised statutory context of NPF & RSES
- Incorporates Transitional Population Projections set out in NPF Roadmap & RSES & adjusts the Core Strategy to take into account the revised population targets.
- Designate settlements below Key Towns
- Self-sustaining Growth Towns
- Self-sustaining Town
- Towns (Small & Rural)
- Villages
- Address Climate Change through integration of “Climate Resilient Kildare”:
- Kildare County Council Climate Change Adaptation Strategy 2019 – 2024
- Incorporates policy requirements of NPF & RSES inc. 30 % infill (1 example)
- Integrates Metropolitan Area Strategic Plan (MASP) into CDP

- In calculating the Core Strategy the following are of note;
- A. Kildare County Council has taken the higher range + 25% in calculating the 2026 target which is reducing the potential allocation to 2031.
- B. The 2026 population target is 254,000 which equates to an additional 31,496 persons.

- C. Add the 25% headroom = 39,370 persons to 2026 (= 261,874 persons).
- D. The transitional population targets are set to 2026 & 2031 (with the exception of Maynooth).
- E. The 2026 figure for Kildare is 261,874 persons across the county for the period between 2020 & 2026 & 266,500 persons across the county for the period between 2026 & 2031.
- F. The census of population was 222,504 persons in 2016, no further conclusive updates on population growth (in particular) and housing stock are available since this date.
- G. Housing completions over the past 4 years indicate ca. 1186 units per year on average for County Kildare

New dwelling completions – Co. Kildare 2016-2019

	2016	2017	2018	2019
Q1	122	195	244	397
Q2	154	215	271	393
Q3	142	259	325	488
Q4	220	316	381	623
TOTAL	638	985	1221	1901

Reality

- Total Housing Units completed between 2016 and 2019 = 4,745 units (Average of 1186 units per year)

NPF Roadmap

- 14,060 units between 2016 & 2026 = Average of 1406 per year over 10 years
- Taking account of the 4,745 built between 2016 & 2019 & there is ca. 9,315 units remaining to be delivered to 2026 which equates to ca. 1330 units/year.
- Proposed Variation No. 1 provides for ca. 2,000 units per year over the remaining 3 years of the CDP.

Note; LAPs and permissions will run over 2 CDP periods

Settlement Type	Towns / Villages	2016 Census Pop	2016 Dwellings	Allocated Growth (%) 2016-2023	NPF 2026 Pop Growth	NPF 2026 Pop Growth in housing units	Population Growth from 2020 to 2023 (annualised from 2026 NPF Figures)	Dwellings Target 2020 to 2023
Key Town	Maynooth (MASP)	14,585	5,171	10.9%	4,291	1,533	1,839	657
	Naas	21,393	7,726	14.9%	5,866	2,095	2,514	898
Self-Sustaining Growth Town	Newbridge	22,742	8,260	11.6%	4,567	1,631	1,957	699
	Leixlip	15,504	5,524	10.2%	4,016	1,434	1,721	615
	Kildare	8,634	3,158	4.7%	1,850	661	793	283
	Athy	9,677	4,281	4.8%	1,890	675	810	289
Self-Sustaining Town	Celbridge	20,288	6,969	10.0%	3,937	1,406	1,687	603
	Kilcock	6,093	2,212	4.0%	1,575	562	675	241
	Monasterevin	4,246	1,706	2.6%	1,024	366	439	157
Town (Small)	Sallins	5,849	2,071	1.9%	748	267	321	114
	Kilcullen	3,710	1,401	2.5%	984	352	422	151
	Kill	3,348	1,227	1.3%	512	183	219	78
	Clane	7,280	2,741	2.4%	945	337	405	145
	Prosperous	2,333	813	1.0%	394	141	169	60
Town (Rural)	Rathangan	2,611	1,009	0.9%	354	127	152	54
	Athgarvan	1,176	373	0.7%	276	98	118	42
	Castledermot	1,475	622	0.5%	197	70	84	30
	Derrinturn	1,602	558	0.6%	214	76	92	33



Small Adverts/Local Services



CABINET MAKER FITTED WARDROBES

PROBLEMS WITH YOUR
WARDROBES / KITCHEN
WORKTOPS – DOORS CHANGED
SHELVING



General Wood Work
Wall Fixtures, Side Gates

For Fitting - Repairing
Call Val O'Flynn

email: vofcabinetmaker@gmail.com

Telephone: 01- 6275872
Mobile: 087- 6235078

Watkins Tile Centre Main Street Leixlip

*"We have you covered
for all your ceramic
wall & floor tiles"*

Opening Hours:
Monday to Friday
9.00 am - 5.00 pm
Saturday
9.00 am - 3.00 pm

**One Stop Tile Shop with a huge
selection of wall & floor tiles**

Catering for everyone with a personal touch!

Telephone: 01-6245560

Maynooth Bookshop 68 Main Street Maynooth



**Books
Stationery
School Books**

New & Second-Hand

**Telephone: 01 6286702
Fax: 01 6291080**

E-mail maynoothbookshop@eircom.net

Maynooth Newsletter Advertising

*Small Adverts/Local
Services*

from €10 per Month

Contact a member of the
Newsletter Team for a package
to suit your needs

Phone 01-6285922 or
email: office@maynoothcep.com

SUMMER ART CLASSES BY NINA PATTERSON

@ GERALDINE HALL
MAYNOOTH

FOR 1ST - 6TH CLASS CHILDREN

3 DAYS (TUE WED & THURS) 1 HOUR EACH DAY
STARTING TUE AUG 11TH AND TUE AUG 18TH

FOR FULL DETAILS CONTACT NINA

M: 087 2977797

W: ninapatterson.com

NEWS - 4 - U

**Glenroyal Shopping Centre
Phone: 01-6290994**

Large selection of Newspapers
Magazines, Stationery, Greeting Cards &
Paperback Novels
Selection of Kids Toys & Cuddly Toys

Agents for the National Lottery
Payzone Agents for all Bills
& Leap Card supply & Top-ups
Agent for AES Bin Tags & Card Top-ups



Opening Times: Mon - Fri: 7am - 8pm
Sat: 7am - 8pm
Sun: 7am - 6.30pm



Newspapers & Magazines to order

Just Ask Michael & Louise

DONOVAN'S CENTRA Greenfield Shopping Centre Phone: 01 628 5101

Mon - Sat 7.30am-10.00pm Sun 8.00am-10.00pm

Breakfast Rolls, Paninis,
Sandwiches of your Choice

Tea Coffee & Soup
Private catering service also available.

Offering Our Promotional Range
Flowers, Fruit & Veg., Groceries
& Gourmet Cheese

Newsagents, Magazines & Lotto
ATM Machine & Phone Credit

Off-Licence Stocking
A Wide Range of Wines

JIM'S SHOE REPAIR Tesco Shopping Centre

LADIES & GENTS HEELS
WHILE U WAIT
SHOES STRETCHED
HEELS LOWERED
LEATHER SOLES STITCHED ON
KEY CUTTING SERVICE
ALL KEYS CUT
HOUSE AND VEHICLE
PHONE 086 8657142



Opening Hours
Monday to Saturday
9.30am - 6pm



Excavation Services & Hire

Contact Bernard
087-2630621/087-2961785
01-6242287

Foundations - Drainage - Footpaths
Garden Works - Tree Surgery
and Landscaping

FULLY INSURED
SAFETY COMPLIANT
C2 REGISTERED

FREE QUOTES





Writers’ Corner - Short Stories/Articles from our Readers

NO TIME TO WASTE

Maynooth has done extraordinarily well over the past number of years winning gold medals and various other awards in the Tidy Towns Competition. Well done to the committee and all the other hard workers.

I must however ask what all this means. Is it labour in vain? Sisyphus at his eternal labours? Ben Hur chained to his oar? Donald Trump's advisors at their daily task?

The streets are much cleaner than they were a few years ago. There are beautiful flower arrangements in many locations. There's an aromatic garden even if it's, in my opinion, somewhat out of the way. But is there any evidence that there is a change of attitude towards the local environment in the people who use the streets? Are they clean because people now use the bins or bring home their litter with them or is it that the people drop their refuse as they always did and the Tidy Towns workers pick it up after them? That is scarcely the philosophy of the whole Tidy Towns movement.

Of course the vast majority of Maynooth adults would never drop litter on the streets whether the town were competing for a prize or not. But not all categories of citizens are equally careful. There are, at least, from time to time some strong indications that the attitude of some town dwellers has not changed. The fine days of May and the balmy evenings were witness to an enormous amount of refuse, cans, bottles, pizza wrappings, etc. showing a great reluctance to having themselves housed in the various bins around the town. So much so that Marian,

Maynooth's dawn restorer of the town's frequently defaced visage, had sometimes to bring three or four loads of rubbish to the local depot and at other times there was just too much for her to collect. Nice summer weather always increases the likelihood of such happenings.

Leaving certificate results for roughly 60,000 school leavers are about now being determined. I wonder if environmental awareness were to be included as one of the criteria would the grades be noticeably altered! What chance have we of ever influencing climate change for the better if institutes of formation, families, schools, colleges, churches, clubs and other organizations fail to emphasize environmental awareness as one of their highest priorities and how are people to become aware of global warming if they are not keenly aware of their surroundings? "There is a nobility in the duty of care for creation through little daily actions, and it is wonderful how education can bring about real changes in lifestyle"* that will make this world a better and more beautiful experience for all. Many thinkers are indeed convinced that without immediate and serious environmental care there is no future for our magnificent planet.
Remember Greta!
*(Laudato Si ...)

One duck long and three ducks wide,
She crouched beside the water;
Her gentle wings embraced her brood,
Just doing what they oughter!

By GM.

Useless Quotations?

Tony couldn’t be certain where he had read some lines that stuck in his memory, though most were easier to pin down, lines such as ‘Joan of Arc, what small words they are to tell of a rich world made empty and sad.’ That was the ending of Mark Twain’s ‘A Girl in White Passes through Rouen.’ Other lines such as, ‘But just then the bells began to peal and this is what they said, “Turn again, Whittington, all worthy citizen, Lord Mayor of London” were from stories he had read as a boy in books his mother had bought for him. He could even remember the punch line from an anecdote, which a workman on their farm told about what a frog said to boys who were pelting him with stones, ‘What’s fun to ye is death to me.’ But apart from their curiosity value, was there any use in such fragments? Like it or not, his short-term memory was kaput.

Kathy, his wife, often reminded him of obvious things such as that he had left a tap running or hadn’t turned the TV off before going to bed. ‘You can quote poetry,’ she would observe, ‘but you can’t remember the neighbours’ names, not to mention our anniversary.’ ‘It’s just that I have things on my mind,’ he would counter, ‘not that I don’t have occasional lapses, or as the saying goes, “even Homer nods”.’ ‘There you go again with your learned quotations,’ she shook her head resignedly. ‘Just be careful that you take the right tablets this evening and, most important, remember to turn the gas fire off or we’ll both end up without a roof over our heads.’

‘I remember the first time I laid eyes on you at that dance in Zhivago and I remember you walking down the aisle in your white veil.’ ‘Oh, Tony, you must think me a right nag. It’s just that I worry about you.’ She smiled contritely and he hugged her. ‘I know, pet. From now on I’ll make an effort to be more alert.’ Even as he spoke he was thinking of the end of Patrick Pearse’s story *Eoghainín na nÉan*, Oweneen of the Birds: ‘*Bhí se na mílte míle I gcéin ... ins an tír ina mbíonn sé ina shamhradh I gcomhnaidhe.*’ He was thousands of miles away... in the land where it is summer always.

Surely it was always summer when he and Kathy were first married, before the stress of raising a family and

making ends meet kicked in? His salary as a clerk in the county council wasn’t sufficient to ensure a decent living and Kathy had to go back to her job in the bank, so that they could keep the children dressed properly, as well as taking them on annual holidays. Now the children had their own families to worry about, though, in many ways, times were harder than they had been for him and Kathy. That was progress, two steps forward and three steps back! But at least they were all much better off than those poor refugees fleeing Africa, Iran and – ‘What are you thinking about?’ Kathy began laying out dishes for their evening tea. ‘Oh, just how lucky we are to have a roof over our heads and no shortage of good food.’ ‘Yes, thank God for that. Now, if you can cut up the loaf, I’ll heat some soup.’ ‘Soup again! We’re like our ancestors in the Great Famine,’ he was about to remark, then decided to stay quiet. Kathy mightn’t find the comparison amusing.

Next day, while shopping at the local supermarket, he ran into his friend, Richard. ‘The very person I wanted to meet,’ Richard punched him lightly on the arm. ‘Mick and myself are taking part in the special quiz in Donnelly’s pub this Saturday and we need a third man. Are you up for it?’ ‘You know my memory’s like a sieve,’ Tony protested. ‘That’s not a problem. Mick is good at history and politics and I’m fine for music and sports. It’s the arts questions, especially literature that could trip us up. Now, you’re a dab hand at anything in that area, especially quotations. I can still remember you intoning, “*The strong glare of the Yukon on the white snow –*”’ ‘It was, “*The fierce glare of the Yukon on the immaculate snow.*”’ ‘See, that’s what I mean, you’re word perfect – so what do you say? Come on, Tony. We’ll be like the Three Musketeers, flattening that team from Carrick.’ ‘My short-term memory is wonky but if you and Mick want to risk it...’ ‘Fine! That’s settled then. Saturday at 8pm in Donnelly’s.’

There was a large crowd of men and women in Donnelly’s function room for the quiz, many with drinks in their hands. The Carrick team, which consisted of two very intellectual looking women and a young fellow wearing glasses, got off to an impressive start, though Jim Dockery, the quizmaster, had to caution them twice about ringing their bell and then entering into a further

discussion before answering. Tony didn’t help much, most of the questions drawing a blank in his mind. He was aware of Kathy smiling encouragement but was too embarrassed to meet her eyes. ‘How many GAA senior football finals did Roscommon win?’ the quizmaster asked. Michael and Richard went into a whispered confab, one saying three times and the other two. At last Richard rang the bell and said, ‘Two times.’ It was the correct number, leaving them within striking distance of their rivals. The next question “On what month and year did the Boer War end?” was answered correctly by Michael as May 1902. The following question, ‘Who won the Eurovision Song Contest in 1996?’ had Richard calling out, ‘Eimear Quinn with “The Voice”’. It was the right answer. Both teams were now almost level. ‘*Stately, plump Buck Mulligan came from the stairhead, bearing a bowl of lather...*’ Jim Dockery intoned. Scarcely were the words out of his mouth when, before Tony could ring the bell, one of the women rang theirs and piped up, ‘James Joyce, *Ulysses.*’

Michael looked at him and raised his eyebrows, then shrugged. The next quotation was: ‘It is a far far better thing I do than I have ever done. It is a far far greater rest I go to than I have ever known.’ Immediately Tony rang while exclaiming, ‘Charles Dickens, *A Tale of Two Cities.*’ The two teams were even! It was now down to the decider. ‘*Years hence, in rustic speech, a phrase, As in wild earth a Grecian vase!*’ The quizmaster read out.

Hitting the bell, Tony shouted, ‘Padraic Colum, *A poor Scholar of the Forties.*’ It was the correct answer. The crowd burst into applause and Michael and Richard each took one of Tony’s arms and raised them in the air. Kathy came up then and told him he had been superb. ‘He’s like Frankie Kinlough scoring for Roscommon in the 1944 All Ireland,’ Richard declared. ‘That was a few years before my time,’ she smiled. ‘Though not before mine,’ Tony added ruefully. ‘You know what they say,’ Michael grinned, “The older the fiddle, the sweeter the tune.”

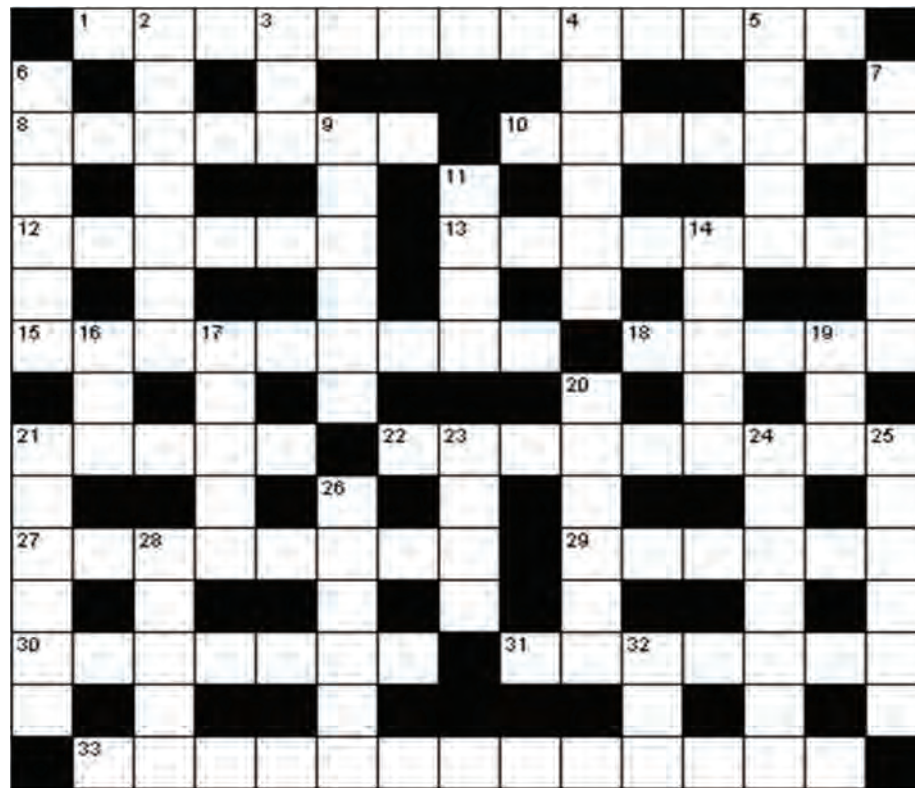
P.G. Nerney

Clues Across

JULY2020 Crossword - No. 492

Clues Down

1. Treat by psychoanalysis (13)
8. Capital of Georgia (7)
10. Cavalry soldier (7)
12. Remember (6)
13. Rain containing industrial pollution (4,4)
15. Something obscene (9)
18. Burning gas (5)
21. Domesticates (5)
22. Loss of a ship (9)
27. Uneasy (8)
29. Experts (6)
30. Adhesive label (7)
31. Protection (7)
33. Donkey (5,2,6)



2. Chooses (7)
3. Study carefully (3)
4. Apprehensive (6)
5. Above (5)
6. Coiffure (6)
7. Son of the sovereign (6)
9. Tiles collectively (6)
11. Diplomacy (4)
14. Sovereign (5)
16. Fur scarf (3)
17. Defraud (5)
19. Family name prefix (3)
20. Bring up to date (6)
21. Shove (6)
23. Silence (4)
24. Expenditure (7)
25. Person who kisses (6)
26. Respectable (6)
28. Steeple (5)
32. In place of (3)



Solutions to Crossword No. 491



Entries for the Crossword & Sudoku Competitions have been suspended until further notice.

If you have access to a printer and wish to complete the Crossword and/or Sudoku for fun you can print the single page by going to File -> Print and print the single page number only.

Difficult

Sudoku Challenge

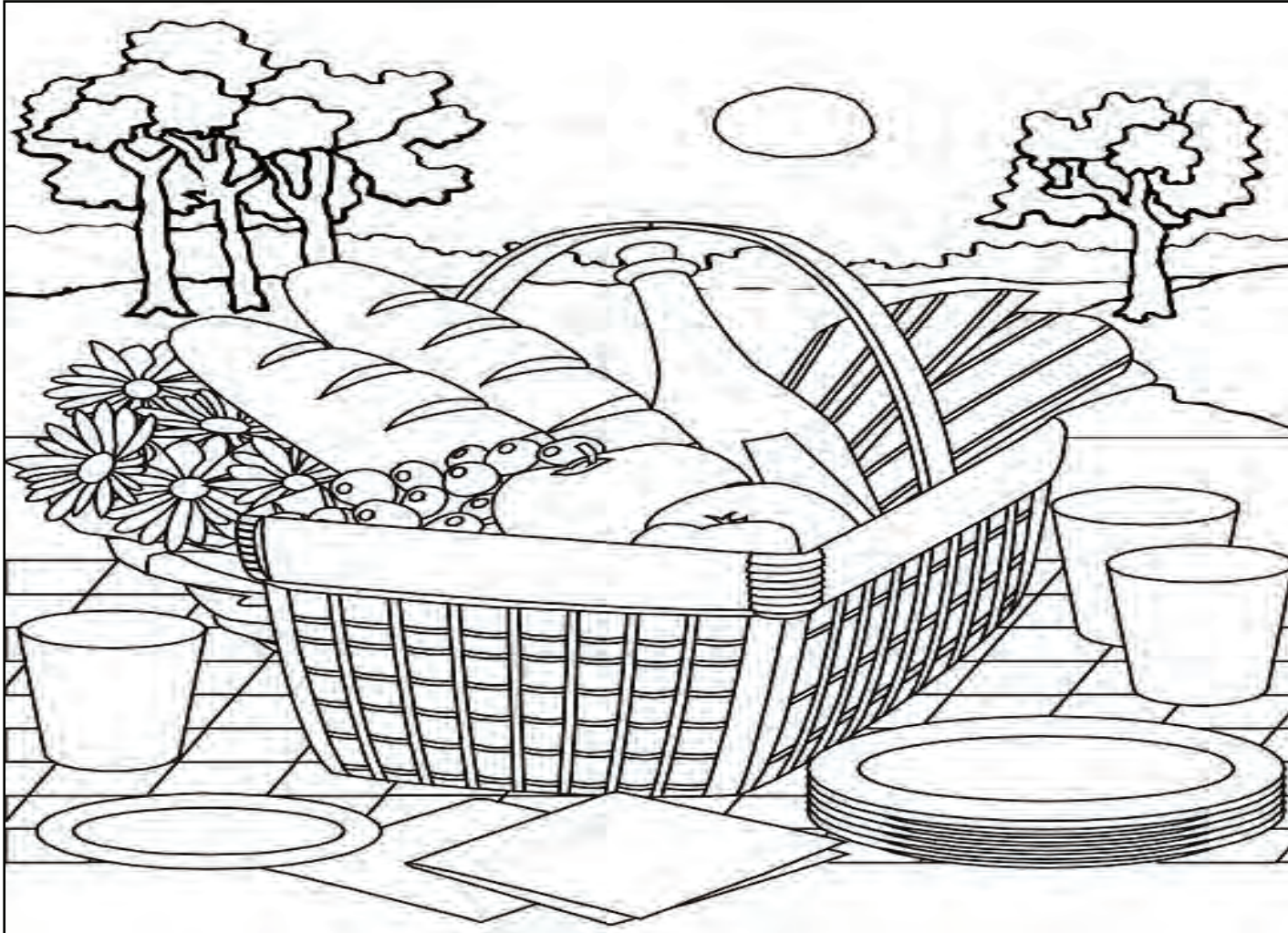
Super Difficult

			8					
	7				9		1	
6		9		4	7	3		
		8				4		1
4			1		8			5
1		3				2		
		4	7	2		1		3
	3		4				9	
					5			

							5	
					2		8	9
5	6		8	7				
					9		3	8
		4	3		5	2		
2	3		1					
				9	3		4	1
9	7		2					
	5							



Entries for the Colouring Competition have been suspended until further notice



Entries for the Colouring Competition have been suspended until further notice.

If you have access to a printer and wish to complete the colouring or Puzzles for fun you can print the single page by going to File -> Print and print the single page number only.

Be sure to avoid printing ALL the pages of the Newsletter unless you intend to do so.

Junior Puzzle Corner

S	U	M	M	E	R	L	H
C	I	P	O	R	T	N	O
B	S	U	N	B	A	L	L
R	E	L	A	X	E	P	I
T	D	A	Q	S	A	N	D
A	Y	B	C	A	Z	I	A
N	F	U	N	H	R	S	Y

TROPIC
BEACH
SUMMER
HOLIDAY
SAND
BALL
TAN
RELAX
SUN
FUN



Join the Dots and see who this is.

July is an excellent month for bees and as you probably know already, they are essential for beautiful and productive growth in the garden. Planting colourful and fragrant flowers in your garden will attract them. If your compost heap is looking dry, give it a watering. Regularly give fruits, vegetables and flowering plants a liquid feed. Continue to deadhead flowers and weed regularly. Water your hanging baskets and containers daily.



In the Fruit & Veg Garden

More thinning of root crops. By now the thinning's should be large enough to eat. Hurray! Irrigate your plot in the mornings. You want the water to reach a depth of at least 8" Regular watering is important to avoid bolting and split roots and fruits Shade over lettuce, coriander, pak choi, red onions, broccoli and spinach to avoid bolting in warm weather Sow Spring cabbage seeds in your greenhouse Stay vigilant for potato blight Keep carrots covered to protect against the 2nd cycle of carrot fly Keep rows of brassicas covered with garden netting to protect against caterpillars & the cabbage white moth Weed between rows regularly, especially younger crop

Knowing when to lift garlic can be a tricky proposition – harvest them too early and the bulbs will be too small, but harvest too late and the bulbs will begin to lose their quality.



The old rule is to sow garlic before the shortest day of the year (Dec 21) and harvest before the longest (June 21). Some people also do a spring sowing which won't be ready until late July or August.

A good general rule of thumb is to do a test when a third of the leaves on each plant are gone brown. Carefully push back the soil around one plant and have a look at the bulb to check its size. If it's too small, put the soil back around it. Lift all your garlic when a half to two-thirds of the leaves are gone brown.

In the Greenhouse

Water your tomatoes about 3 times a week. Wet the floor to your greenhouse to increase humidity. Keep doors & window vents open during the day. Move potted plants outdoors on warmer days. Position yellow fly traps to prevent pest build-up. Keep an eye on pots & water trays for slugs & snails. Early harvest on cucumbers.



Plant Care

Tie back top heavy roses. Continue to spray, feed and deadhead roses. Cut back herbaceous plants such as geraniums, penstemons & delphiniums. Continue to keep recently planted hedging, trees & shrubs well-watered. Apply a handful of fish blood & bone to base of late flowering herbaceous plants such as asters, astilbes, rubeckia, lupins & echinacea. Plant autumn bulbs such as nerines, cyclamens & lilies.

Lawn Care

This is a quiet time for lawn care. You can feed your lawns or treat with lawn weed, feed & moss killer. Apply dicophar to kill any broadleaf weeds.

If you have been less than vigilant in watering your pots, the compost may have shrunk away slightly from the sides of the pot. Pack this gap with new compost. This will help prevent water run-off and give your plants a new lease of life. Add some slow-release pelleted fertiliser if not already mixed in.

Water new and young plants regularly but use water sensibly. Water heavily to encourage deep roots rather than sparingly which will encourage surface rooting. If plants are showing signs of mildew (especially calendulas, courgettes and roses), water well during dry spells. Mulch when the soil is wet. Remove some foliage to improve air circulation.

Feed and water container plantings.

Prop up perennials

Stake dahlias and chrysanthus, which are growing well now. Dahlias are best supported in a triangle of canes, with chrysanthus tied to their own cane. Or, with chrysanthus, grow a



whole bed through netting stretched horizontally about 18in (45cm) from the ground. Staking is important as, by the time dahlias and chrysanthemums in particular are at their peak height, autumn wind and rain will be on the way.

If going on holiday, ask a friend or neighbour to pick your flowers, salad and veg in your absence to prevent everything running to seed.

Feed roses – do this now, after the first flush of flowers, to encourage more. Use a rose food, or straightforward, well-rotted farmyard manure.

Intersperse rose beds with other plants such as nepetas and salvias to help reduce the spread of disease.

Plum Slate Chippings

Has many qualities making it a great choice of aggregate for gardens & garden design. The first real benefit of plum slate chippings is that the aggregates themselves are flat, making this an ideal surface for walking over. Slate & slate chippings by nature flake away into long flat sections giving the stone its distinct look & shape. Some nice planting combinations for plum slate chippings would include both silver foliage plants & purple flowering plants.

***NATURE SOON TAKES OVER
IF THE GARDENER IS ABSENT***



Nutritious Snacks to make at home

Fruit Smoothie

Fruit smoothie recipes are easy to make, and are perfect for a snack or breakfast. You only need a few ingredients and a blender and you are ready to go! Serves 2



Ingredients:

- 1 cup fruit juice
- 1/2 cup yogurt
- 2 cups frozen fruit
- 1 small banana (optional)

Method:

1. Add all the ingredients to a blender.
2. Blend on high until desired consistency is reached. Add a little more juice or a little more frozen fruit (or ice) as needed to get desired consistency.

Date Bars

Ingredients:

- 250ml water
- 200g stoned dates (chopped)
- 175g plain flour
- 1/2tsp bicarbonate of soda
- 175g soft light brown sugar
- 100g porridge oats
- 175g butter diced

Method:

1. Line a 20cm x 20cm tin with greaseproof paper.
2. Place water and dates in a saucepan and bring to a simmer. Cook for about 10 minutes on low heat until date mixture is soft and thick stirring occasionally. Remove from heat and allow to come to room temperature.
3. Sift flour and bicarbonate of soda into a bowl. Add sugar and oats and mix well. Add the butter and rub in.
4. Press half the oat mixture into base of tin. Spread the date mixture over this and sprinkle/ cover with remainder of oat mixture. Press gently. Bake at 180 C for 40 minutes approx. or until golden brown at the edges and set in the middle.
5. Allow to cool completely then cut into bars. These will keep for up to a week or may be frozen.



Peanut Butter Protein Balls

Ingredients:

- 3/4 cup old fashioned rolled oats
- 1/2 cup all-natural peanut butter
- 2 tablespoons ground flax seeds or ground chia seeds
- 2 tablespoons hemp seeds
- 2 tablespoons honey or maple syrup
- Pinch of fine sea salt

Method:

1. Combine the oats, peanut butter, flax seeds, hemp seeds, honey and sea salt and stir well with a spatula. The dough should stick together without being so sticky it sticks to your hands.
2. If the dough feels too sticky to roll into balls, add 1 more tablespoon flax seeds and stir again. The mixture should hold its shape when pinched between your fingers.
3. Scoop the dough, and then roll them between your hands to form balls. Repeat with the remaining dough placing them on a pan lined with parchment paper as you go.
4. You can serve these straight away or leave in the fridge for an hour to firm up. Once firm transfer them to an airtight container and store at room temperature for 3 days or up to two weeks in a fridge. They may also be frozen for up to 3 months.



Flapjacks

Ingredients:

- 225g /8 oz porridge oats
- 125g /4oz butter or margarine
- 125g /4 oz demerara sugar
- 75g /3 oz golden syrup

Method:

Preheat the oven to 180C /350F Gas 4 . Grease and line an 8in /20cm square tin.

Melt the butter/margarine with sugar and syrup.

Stir in the oats.

Turn into prepared tin. Smooth top and press down well.

Bake for 20 –30 minutes.

Cool for 5 minutes . Cut into fingers.

Leave to cool completely before removing from tin.



Snacks can be healthy! Nutritious choices can also help you feel energised throughout the whole day.

A little bit of meal prep goes a long way, and there are lots of recipes you can make ahead of time so you've got healthy snacks on-the-go.





Cllr. Angela Feeney Maynooth Labour News

E mail: angelaemfeeney@gmail.com - Phone: 0872381962



Supporting Local Businesses as Ireland reopens
Cllr Feeney, at the June MD meeting, requested the Council to consider supporting local cafés and restaurants by allowing them, as a temporary measure, to make appropriate use of public spaces to accommodate customers within current restrictions and guidelines, given the on-going challenges due to COVID-19. Cllr Feeney stated at Council that local businesses are the backbone of our communities, they support us by sponsoring school football teams and all kinds of community activities and they provide jobs. In these unprecedented challenging times they are really under pressure to survive and some are even at risk of closing when the social distancing of 2m or 1m is applied in their premises particularly those that have small premises. So Cllr Feeney suggested to Council that we have to do everything we can to support them, hence her suggestion to use the available public spaces for additional seating.

The Council responded very favourably to support businesses such as cafés, restaurants, pubs, they can now apply for a Section 254 licence and Council has agreed to waive the licence fee, which would normally be €125 per table. It is important to stress that there is a process to be adhered to. The application includes a plan in accordance with steps outlined and the Council will consider each application on its own merits as long as it is accompanied by the required insurance and drawings showing what is proposed. If the application is for a semi-permanent or permanent structure there may be a need for planning permission. The Council is very anxious to support the business community during this exceptionally difficult time but they also have to balance that against public safety and make sure that each proposal that comes in does not interfere with the free flow of pedestrian traffic and does not represent a hazard for those using the footpaths or those with accessibility issues.



Cllr Feeney calls for a review of Disabled Parking Spaces

At the June MD Council meeting, Cllr Feeney submitted a question to the Council asking if it will be carrying out a review of the disabled parking spaces in Maynooth in the near future. What prompted the question from Cllr Feeney was that some parents from the presentation girls national school who have disability badges for their children got in touch saying that there is no disabled parking space for them to use near the school. Granted, there are disabled spots elsewhere on Main Street but not beside the school. Given that the school is in the town, there are 600 pupils, it is a very busy main street with a lot of traffic at that section and add into the mix a parent trying to navigate a wheelchair, so Cllr Feeney put this question to the Council.

The Council stated in its reply that the proposed

public realm urban regeneration development would be looking at all parking in Maynooth town centre, including disabled parking spaces. So Cllr Feeney asks that residents continue to get in touch to bring to her attention any similar issues regarding parking so that they can be included in this review.

Update on the Harbour Field



Following the June MD Council meeting there was an update from the Public Realm Team at the Council on the design for the development of the Harbour Field in Maynooth. This will be a huge 5 Million amenity development for the town. Cllr Feeney and the other MD members at the meeting approved that the design (apologies for quality of photo above taken at the presentation) proceed now to a part 8. This is the opportunity for the public to view the design and to make submissions. Cllr Feeney encourages as many people as possible to have their say. All going well, the Public Realm Team stated that there could be a turning of the sod in 2021.

Cllr Feeney supports the Variation on the County Development Plan

The proposed variation report is a statutory requirement in response to the recent changes in national and regional policy Project Ireland 2040: National Planning Framework (NPF), The Implementation Roadmap for the National Planning Framework and the Eastern and Midland Regional Assembly (EMRA) Regional Spatial and Economic Strategy (RSES). The Government's National Planning Framework (NPF) was published in February 2018 and replaces the National Spatial Strategy (NSS). It provides a framework for the future development of Ireland for the period to 2040. At meetings on June 8th and 9th, the Variation was approved 20 votes in favour and 19 votes against.

- It sets out the revised statutory context of NPF and RSES while incorporating Transitional Population Projections set out in NPF Roadmap and RSES, adjusting the Core Strategy to take into account the revised population targets.
- It designates settlements below Key Towns, Self-sustaining Growth Towns, Self-sustaining Towns (Small & Rural) and Villages.
- It addresses climate change through integration of "Climate Resilient Kildare" and the Kildare County Council Climate Change Adaptation Strategy 2019 – 2024.
- It incorporates policy requirements of NPF and RSES including 30% infill for example.
- It integrates the Metropolitan Area Strategic

Plan (MASP) into the County Development Plan.

Why the Variation is good for Maynooth and why Cllr Feeney supported it.

The Variation provides for a continuous and sustainable level of housing delivery across County Kildare in a manner that will allow for the provision of necessary and adequate levels of social and physical infrastructure. Instead of building more and more housing estates, the Council will identify other social and physical infrastructure needs through the preparation of an infrastructural assessment which will inform the sustainable development of Maynooth into the future, something that has been badly missing all these years.

Maynooth needs a period of absorption. For many years now we have seen nothing but large housing developments in Maynooth without any of the infrastructural or social gains, creating an urban sprawl. We all remember when our town came to a traffic standstill last October and we all agree that this is unsustainable. Yes, we will continue to meet the housing and most importantly the social housing targets set for the town and that is only right in the midst of a housing crisis but we cannot allow it to continue at the excessive rates we've seen to date, putting in huge developments that put further pressure on a town that is bursting at the seams.

This Variation now gives us a chance to catch up – to finish the ring road, get a second train station, to complete the Harbour Field amenity, to build that community hub and get the childcare crisis sorted. We need to create a highly sustainable town plan for a high quality of life fit for the 21st century with enhanced rail and bus links, joined up thinking on cycling and pedestrian routes, primary health care centre, childcare, schools, a Garda Station and most importantly to retain the beautiful and historic character of the town we all love and choose to live in.

What does being a 'Key Town' mean for Maynooth?

Maynooth has been identified in the Regional Spatial and Economic Strategy as a key town with the assets and capacity to grow in a sustainable manner while minimising impacts on the receiving environment. Key towns can act as economic drivers and employment centres for the region. The regional policy objectives set down specifically for Maynooth in the RSES include the following:

- Support the continued development of Maynooth, co-ordinated with the delivery of strategic infrastructure including pedestrian and cycle linkages within the town and to the Royal Canal Greenway, DART expansion and road linkages forming part of the Maynooth Outer Orbital Route in a manner which supports future development and population growth and builds on synergies with Maynooth University promoting a knowledge-based economy.
- Support Maynooth as a key town to act as an economic driver for north Kildare and provide for strategic employment at key locations to improve the economic base of the town and provide for an increased number of local jobs.

(Continued on page 25)



Cllr. Angela Feeney Maynooth Labour News

E mail: angelaemfeeney@gmail.com - Phone: 0872381962



(Continued from page 24)

Addressing concerns

- Delivering on Social Housing: Yes, we will continue to meet the housing and most importantly the social housing targets set for the town. Social Housing is not impacted by core strategy figures. All those on the social housing list are already resident in the county; the core strategy is to do with inward migration.
- Population Growth: The Eastern and Midland Regional Assembly population projections have not been given yet and no town is locked into the framework. It is important to emphasise that this was not for consideration for the Variation. The variation is to rebalance population and to put the infrastructure in place first and then the housing estates as opposed to the other way round.
- Zoning: Proposed Variation No. 1 of the Kildare County Development Plan does not affect the development /settlement boundary of any town or village within the County or any land use zonings contained in the plan.
- Local Area Plans: The County Development Plan is due for a full review in early 2021 at which stage consideration will be given to settlement boundaries for towns/villages and submissions regarding land use zoning can be taken into consideration during this process. Land-use zonings for towns which are above the threshold for mandatory Local Area Plans, will be addressed through the specific Local Area Plan.

What not approving the variation would have meant:

The Minister would have intervened and the matter would have passed to the Planning Regulator. Local Area Plans would have been arrested and these are

overdue for Maynooth, we really need them to proceed. The national framework and regional plans are now aligned with economic incentive and grant schemes and there are 4 applications in KCC Celbridge Naas Maynooth Athy they are still eligible for grant, if refused we would not be eligible.

For further information:

<http://kildare.ie/CountyCouncil/Planning/DevelopmentPlans/KildareCountyDevelopmentPlan2017-2023/Variation1-KildareCountyDevelopmentPlan2017-2023>

Upcoming Motion at Plenary Council on June 29th

That the Council provide a report of current and upcoming developments in the county that include a crèche as part of an approved planning application and what is required by Council to approve repurposing of a planned crèche facility.

Upcoming Motions and Questions at Maynooth MD July 3rd

That council investigates the possibility of piloting a School Streets Initiative in Maynooth whereby access for vehicles is restricted during drop off and collection times of the school and there is enforcement by the Council of illegal parking on footpaths and cycle lanes.

That council introduces temporary 30km/h zones around primary schools in Maynooth, as is already done for some rural schools in the county?

Question 1:

Can the Council provide an update on the status and timeline for the reinstatement of road markings, namely double yellow lines and stop lines at Lawrence Avenue and Maynooth Park since resurfacing works in 2018.

Question 2:

Can the Council confirm if any additional litter collections and dog-fouling measures have been put in place due to increased numbers in public spaces resulting from COVID-19 restrictions?

Meetings attended by Cllr Feeney

May 28th: KWETB, Audit and Risk Committee (online)
June 5th: Maynooth MD Council Meeting, KCC, Naas
June 8th and 9th: Council Meeting to consider Variation of County Development Plan, Newbridge Town Hall
June 10th: MCC (online)
June 16th: BOM Training Part 1 of 2 (online)
June 23rd: KWETB Board (online)
June 23rd: BOM Training Part 2 of 2 (online)
June 25th: MPPS BOM
June 26th: Strategic Policy Committee Meeting at KCC Chamber Naas
June 29th: Plenary Meeting of Council in Newbridge Town Hall
July 3rd: Maynooth MD Council Meeting in Council Chamber Naas

Please stay at home and continue to take care of each other.

Continuing to support you in these difficult times.
Call or text me on 087 - 2381962
Stay Safe.

Councillor Angela Feeney
Maynooth - Clane

LABOUR

Thanks to all Frontline Workers

Reminder that my zoom meeting takes place Fridays 5 - 7pm.
Email me at angelaemfeeney@gmail.com or afeeney@kildarecoco.ie

MU awarded SFI funding to meet challenges of Covid-19 pandemic

Maynooth University academics are leading a range of diverse and innovative projects under the Government's Covid-19 research programme, coordinated by Science Foundation Ireland (SFI).

Announcing €1.4 million in 11 projects this week, the Minister for Business, Enterprise and Innovation, Heather Humphreys, TD, said: "I am delighted to announce this further investment in research and innovation related to COVID-19. These projects will address immediate priorities to assist us with the challenges we face as we seek to reopen our society and economy, and get the country running again."

This week's announcement builds on the investment of €3.5 million across 26 projects in April, under the COVID-19 Rapid Response Research and Innovation programme. Maynooth University projects have received in excess of €600,000 in the two separate Government funding initiatives, to advance scientific expertise on the Covid-19 pandemic and to inform the reopening of society and the economy.

MU SFI Awards announced to date include:

Dr Tim McCarthy in the Department of Computer Science is leading a major project to develop a drone co-ordination and operations centre, and a platform to analyse data to detect where human activities could pose a risk to public health through the spread of COVID-19. The platform for

emergency services aims to support local authorities, organisations and Government agencies to manage general movement and the easing of social distancing restrictions in public spaces.

A project led by Prof Sean Doyle, Biotechnology Programme Coordinator at Maynooth University, will develop two new tests for antibodies against SARS-CoV-2. The project will help to identify who has been exposed to the virus and who may have developed immunity to COVID-19. The tests will also help to find people with high levels of antibodies who can donate them to protect others. The consortium of expertise includes Dr David Fitzpatrick, Dr Rebecca Owens and Dr Ozgur Bayram, at the Department of Biology and the Kathleen Lonsdale Institute for Human Health Research. The Maynooth University led project is in collaboration with the Irish Blood Transfusion Service (IBTS) and National Virus Reference Laboratory (NVRL).

Prof Andrew Parnell will lead a team at the Hamilton Institute to generate computational tools to help Ireland predict the epidemiological (disease-related) and economic consequences of removing interventions during the path to recovery in the COVID-19 pandemic. The project will focus on putting rigorously-tested computational models for medium term forecasting in place that will enable the state to make evidence-based decisions about the impact of relaxing COVID-19 restrictions. The models developed in this project will forecast the likelihood of spatial spread of the disease as travel routes re-open. It will forecast the impact of testing for the virus at borders and of relaxing

interventions of different types at home and abroad. It will also forecast economic recovery by mapping financial indicators from multiple countries. This will support a faster, safer recovery to normality.

Dr Fiona Walsh in the Department of Biology is partnering in a project led by Teagasc and the APC Microbiome Ireland Sequencing Centre to examine the genetic makeup of Covid-19 viruses circulating in Ireland. The research will allow experts to monitor genetic changes in the virus and quickly spot developments that could affect human health, treatment or vaccination against COVID-19.

Minister Humphreys said that the COVID-19 Rapid Response Research and Innovation programme complements existing research work underway in higher education institutions across the country.

The Rapid Response Research, Development and Innovation programme was established by Science Foundation Ireland, Enterprise Ireland, IDA Ireland, the Health Research Board and Irish Research Council.



Kildare Library Service Bringing the Library to Your Door



Kildare Library Service is offering a housebound service for elderly and vulnerable residents of Kildare who are cocooning due to the Covid-19 emergency. From 2nd June, this service will be operated from our 7 main libraries. If you, or someone you know, would benefit from this service, then please contact your nearest main library from the following options:

Athy Library	045 - 980555	athylib@kildarecoco.ie
Celbridge Library	01 - 6272207	celbridgelib@kildarecoco.ie
Kildare Town Library	045 - 520235	kildarelib@kildarecoco.ie
Leixlip Library	01 - 6060050	leixliplib@kildarecoco.ie
Maynooth Library	01 - 6285530	maynoothlib@kildarecoco.ie
Naas Library	045 - 879111	naaslib@kildarecoco.ie
Newbridge Library	045 - 906130	newbridgelib@kildarecoco.ie

You can request 5 items from a wide variety of books, audiobooks, large print books and DVDs then a member of the library team will deliver these to your home. When you are finished with the items, the library team will also arrange to collect them and deliver some new selections if you would like them. The library service hopes that engaging with the service will provide some entertainment and help to lighten the days ahead for those who are dealing with challenging and isolating circumstances. It is important to note that this service is available to all cocooning residents in the county, young or old, and you do not have to be an existing member of the library to take part.

Library membership is free to all and there are no overdue fines for library loans.

Online services during Coronavirus

You can join the library online and get eBooks, audiobooks, online magazines and newspapers for free straight away, or even take language and other courses. go to: www.librariesireland.ie/news/online-services-during-coronavirus

Kildare County Council

Press Release

New appointment booking system going live.



To facilitate the needs of customers and comply with public health guidance, Kildare County Council, in advance of reopening its offices to the public on June 29th, has this evening introduced a new appointments system for a wide range of services. While the Council provided services online, by phone, email and post throughout the pandemic, public health measures have required that our offices remain closed to the public since March 27th. Now, as we move through re-opening phases under the Government recovery plan for Covid-19, it is essential that public health is supported through managed customer access at our offices.

We encourage our customers to go online to use our services but if customers need to attend our offices, please note access will be by appointment only at all Council offices. Therefore, to avoid disappointment, customers are urged to make an appointment. Customers can access appointments for a wide range of services as follows:

Online - www.kildarecountycouncil.ie

Phone - 045 980 200

Motor Tax - appointments may be made online or at 045 980 591

Housing Services - appointments are available by phone only at 045 980 200.

Libraries are also accessible by appointment only online or by contacting your local library directly: www.kildare.ie/library/Library/



MAYNOOTH CYCLING CAMPAIGN

#ChangeOurStreets

We are delighted to announce that following the #ChangeOurStreets campaign, Kildare County Council has issued an invitation to Maynooth Cycling Campaign to a briefing on the Transportation Strategic Policy Committee on Friday 26th June. We have confirmed our attendance and would once again like to thank everyone who supported our campaign, in particular politicians from all parties.

AGM

Maynooth Cycling Campaign wishes to announce its Annual General Meeting at 8:00pm on Wednesday 8th July. The AGM had been planned for March but was postponed due to the Covid lockdown. The meeting will be via Zoom - details of how to attend will be published closer to the time.

Election Winner

Who won the general election? After lengthy negotiations between the three parties, Fianna Fáil, Fine Gael and the Green Party have agreed a Programme for Government. At the time of writing, it is unclear if the Programme will be endorsed by all or, if not, what the consequences will be for the country. What is clear is that cycling is the election winner!

Prior to General Election 2020, Maynooth Cycling Campaign as part of Cyclist.ie, the Irish Cycling Advocacy Network, lobbied for the allocation of 10% of transport investment for cycling, prioritising safe routes to school, rebalancing of transport investment from roads to sustainable/active modes of travel, provision of high quality cycling infrastructure and the promotion of E-Bikes. We are delighted that the political parties have included all of them in the proposed Programme for Government. The #Allocate4Cycling campaign had two sides – funding and quality. In many respects, additional funding was the easy part. We anticipate that the battle for higher standards will be more difficult and will take longer to achieve but rest assured, we are here for the long haul.

Booming Bike Shops

One of the features of Covid Times is that bicycle shops are enjoying an unprecedented boom so much so that some have ran out of bicycles to sell and most have delays in carrying out essential maintenance. Due to the risks associated with public transport from the difficulty of physical distancing and the advice of health professionals to walk or cycle where feasible, more and more people are choosing bikes to move around. As this is a worldwide trend even affecting high car dependent countries such as the United States and Australia, it is becoming more difficult to obtain replacement supplies from global traders. Research published by Sport Ireland showed the number of adults cycling regularly to have nearly doubled during the lockdown to over 500,000 people.

Cycling Revivals

We have seen “cycling revivals” before. In the 1930s, there was an increase in cycling but it was as a result of the poverty arising from the Great Depression and petered out with the onset of war. Twenty years on, in the 1950s, there was another revival with an unprecedented number of racing and touring clubs. Many Dubliners would cycle out of the city at weekends to visit the “rural” parts of Ireland. Some resulted in romantic liaisons and one example of which I am aware resulted in the marriage of a farmer in Carbury to a young woman from Dublin. In the 1970s there was a revival due to the Oil Crisis; but when the oil started flowing again the level of cycling declined. In Denmark and the Netherlands, the revival was maintained but these were exceptions to the trend in most countries. In the 2000s, due to congestion there was increased interest in cycling by governments across the globe; but while cycling increased in the larger cities, the level of cycling nationally continued to decline in most western countries. Time will tell if the recent growth in cycling is to be temporary or sustained.

Maynooth Cycling Campaign is a non-party political cycling advocacy group. Further information on meetings and activities is available on our website.

We are affiliated to Cyclist.ie, the Irish Cyclist Advocacy Network and through it to the European Cycling Federation



BRADY'S CLOCKHOUSE

BAR - LOUNGE - RESTAURANT



The Management & Staff of Brady's look forward to welcoming back all our customers from 29th June

Extra precautions have been put in place to protect our Customers & Staff

Partitions are now in place in both our Bar & Lounge for extra safety

Our upstairs Lounge will also be open as required to provide extra seating & toilet facilities

e-mail: info@bradysbarmaynooth.ie Web: www.bradysbarmaynooth.ie - Tel: 01-5054725



<https://www.facebook.com/BradysClockhouseB2/>

